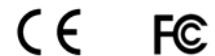


NTD-SERIES
NETWORK TIME PROTOCOL
CLOCK - DATE
DISPLAY
(Series II)



USER MANUAL



DISCLAIMER

The information contained in this document is subject to change without notice. Masterclock, Inc. (hereinafter MC) makes no warranty of any kind with regard to this material, including, but not limited to, the implied warranties of merchantability and fitness for a particular purpose. MC shall not be liable for errors contained here in or for incidental or consequential damages in connection with the furnishing, performance, or use of this material.

See important *limited warranty* information at the end of this document.

Table Of Contents


Introduction	1
Installation	3
Operating Environment.....	3
Pre-Installation Checklist.....	3
Static Networking Configuration.....	3
Dynamic Networking Configuration (DHCP/BOOTP)	3
NTP Addressing Mode.....	3
Display Behavior	5
Major Feature Overview	6
DHCP/BOOTP Auto-Configuration	6
Device Name/DHCP Name Registration	6
Time Zone Offsets	7
Daylight Saving Time	7
NTP Addressing Modes.....	8
Unicast (Query).....	8
Broadcast	8
Multicast	8
Anycast	9
Configuration.....	9
Reset Factory-Default Configuration.....	9
Default Password.....	9
Configuration Methods.....	10
WinDiscovery	10
Using WinDiscovery.....	10
Properties	12
Network Settings.....	12
Device Settings	14
Set Password.....	21
Set Time.....	22
Status	23
Reset Device	25
Telnet Terminal Configuration	25
Get Status Info	26
Set Device Name	27
Set/Reset Password	27
Set IP Configuration	27
Set NTP Server Parameters.....	27
Set NTP Unicast,Multicast,Broadcast Mode	27
Set NTP Client Parameters	28
Configure Telnet Interface.....	28
Ping Via Device	28
Set Time.....	28
Set Time Zone Bias.....	28
Set Daylight Saving Time Parameters	28
Set Digital Display Intensity.....	29
Set Digital Display Type.....	29
Set Digital Display Options	29
Set Analog Clock Hourly/ Twice Daily Correction	29
Soft Reset.....	29
Reset Configuration	29
Set stepper hand position analog clock	29
Get Status stepper analog clock	29
Enable/Disable User Control of Digital Display.....	30
RS-232 Terminal Configuration	31


Troubleshooting Tips.....	32
Specifications.....	38
Physical.....	38
Power Requirements.....	38
Communications – Protocol.....	39
Communications – I/O.....	39
Power Requirements.....	39
Operating/Storage Temperature & Humidity	39
Compliance.....	40
LIMITED WARRANTY.....	41
Exclusions	41
Warranty Limitations	41
Exclusive Remedies.....	41
Proprietary Notice.....	41
Appendix A - WinDiscovery Global Password Feature	42
Enabling Global Password.....	43
Disabling the Global Password.....	43
Changing the Global Password.....	44

Introduction

Network Time Display (NTD) is a series of versatile, multi-featured Network Time Protocol (NTP) driven clock displays. These devices have a built-in SNTP client and are designed to display time referenced to an internal or Internet NTP server, using SNTP (Simple Network Time Protocol). The network clocks can be configured for time zone offset and automatic Daylight Saving Time (DST) adjust and allow for maintenance free reliable operation.

The NTD series, consists of the following NTDX6 (6 digit) and NTDX4 (4 digit) members:

Display Type		Six Digit Digital Time/Date
Name	Power options (Part numbers)	<ul style="list-style-type: none"> • 12 hour (with PM indicator) time • 24 hour time hh:mm:ss • MM:DD:YY date • DD:MM:YY date • Worldwide Time Zone • Worldwide Automatic DST
NTD26 2.3" Characters, Rackmount – 2RU	AC model (NTD26-AC) POE model (NTD26-POE)	 <p>NTD46</p> <p>NTD26</p> <p>NTD86</p>
NTD46 4" Characters, Wallmount	AC model (NTD46-AC) POE model (NTD46-POE)	
NTD86 8" Characters, Wallmount	AC model (NTD86-AC)	

Display Type		Four Digit Digital Time
		<ul style="list-style-type: none"> • 12 hour (with PM indicator) time • 24 hour time hh:mm:ss • Worldwide Time Zone • Worldwide Automatic DST
Name	Power options (Part numbers)	
NTD24 2.3" Characters Wallmount	POE model (NTD24-POE) DC model (NTD24-DC)	
NTD44 4" Characters, Wallmount	POE model (NTD44-POE) DC model (NTD44-DC)	
		<p>Please refer to the <i>Specifications</i> section of this document for additional details regarding each model and available options.</p>

The NTD clock line includes the *WinDiscovery* Windows based network management software as well as a telnet interface for configuration, and maintenance. Other features include:

- Time zone offsets (to one second resolution) support any biasing requirements
- Complete flexibility in daylight savings time configurations
- Real-time clock backup retains time during loss of power and/or NTP
- Primary and secondary NTP source with fault-tolerant switching
- Supports NTP broadcast, multicast, and query (unicast) modes
- Fully configurable network settings, including DHCP/BOOTP support.
- Security features include password protection of configuration, encrypted communication, and the ability to disable telnet management access.
- Selectable Display formats
- Adjustable brightness
- Status display to remotely ‘view’ clock display through WinDiscovery application.

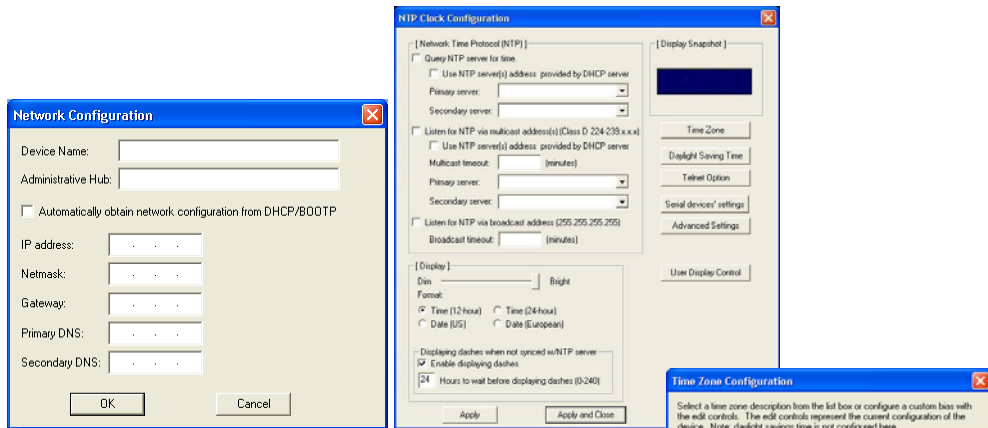
Installation

Operating Environment

The NTD series is not water or moisture proof and is designed for indoor use only. Treat it as you would any other delicate electronic device and do not expose it to water, excessive heat, or physical abuse. See the *Specifications* section for details on the environmental/operational conditions.

Pre-Installation Checklist

Before installing an NTD, one should be prepared with the following basic configuration information that the device will require. It may be necessary to obtain some or all of this information from a network administrator in your organization.



Static Networking Configuration

- ___ IP address and netmask designation for device
- ___ Primary and secondary DNS (domain name) servers
- ___ Gateway/router
- ___ Primary and secondary NTP time sources

Dynamic Networking Configuration (DHCP/BOOTP)

- ___ Confirm that a DHCP/BOOTP service is accessible on the local network
- ___ Determine if DHCP server will provide NTP server configuration
- ___ Determine if DHCP server will provide time zone configuration

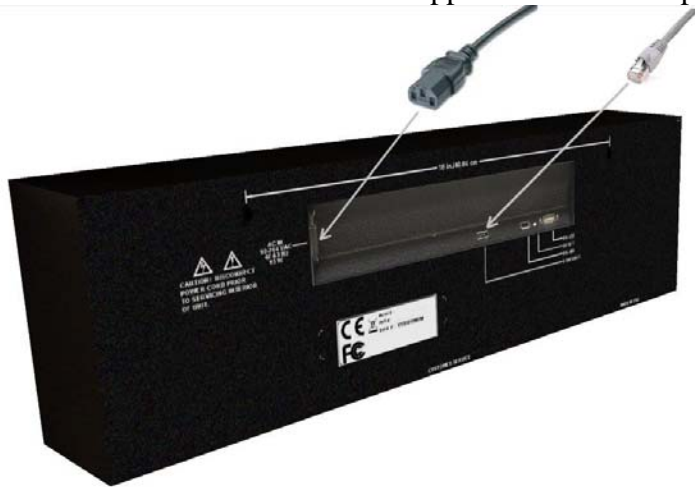
NTP Addressing Mode

- ___ Determine if the clock (client) will query the NTP server (unicast mode), listen for NTP broadcast messages (broadcast mode), or listen to NTP as part of a multicast group (multicast mode)

All NTD clocks can be provided with a verbose name. The name is arbitrary and may be useful for organizing and managing devices once installed at a facility. By default, device names are the product name abbreviation followed by the device's Ethernet (MAC) address. Customers may wish to designate names relating to their own organizational requirements. It is recommended that a robust naming scheme be developed before devices are installed to different locations within an organization. a robust naming scheme be developed before devices are installed to different locations within an organization.

AC Versions:

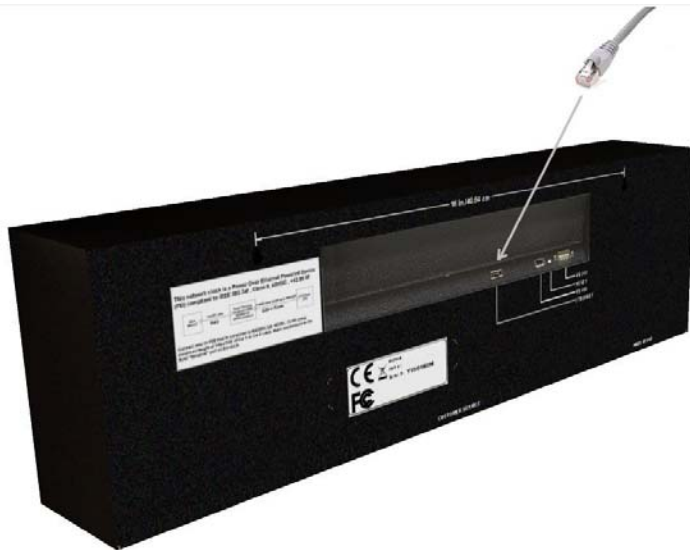
AC models of the NTD clock are supplied with an IEC power cord



- Insert the standard Cat 5 or Cat 6 network cable into the RJ45 connector on the rear of the unit.
- Insert the AC power cord into the IEC connector on the rear of the unit.

POE Versions:

Power Over Ethernet (POE) models will require an IEEE 802.3af compliant POE injector, or switch with +48VDC output on spare pairs of the network cable conductor 4 & 5 with corresponding 48 VDC returns on pins 7 & 8, or by sharing the data pins and their returns.



- Insert the standard Cat 5 or Cat 6 network cable into the RJ45 connector on the rear of the unit.
- The other end of this network cable must be connected to an IEEE 802.3af compliant PSE (Power Sourcing Equipment) with +48VDC.
- This single network cable will carry both data and power. Maximum distance is 100m/328ft

*[Important Note: the NTD clock with an installed POE (Power Over Ethernet) option, will obtain its power directly from a POE powered source using the spare wires of a standard network cable with RJ45 connector for input power. **The POE source must be a fully compliant IEEE 802.3af PSE operating at +48VDC. POE sources not IEEE 802.3af compliant might damage the clock and void the warranty.**]*

After application of power, the network clock will go through an internal self-test. Time from the real-time clock backup will then be displayed until the clock is configured to find an NTP reference. The colons will flash until an NTP source is found. The flashing colons are a normal visual status indication alerting the user that the clock is not synchronized to the NTP server.

[Note: the NTD series of clock displays are enabled with DHCP by default. When configured to obtain network configuration through DHCP, the display may hesitate on startup while DHCP is resolved.]

At this time the clock can be communicated with over the local network using the WinDiscovery application. WinDiscovery can find and identify clocks through the exchange of broadcast messages by using UDP broadcasts, even when TCP/IP networking parameters are not configured on the same network.

[Note: networks separated by physical routers will often block UDP broadcasts preventing WinDiscovery from locating devices on a remote network. Under such circumstances, WinDiscovery must be operated from a computer within the remote network or routers separating the networks must be configured to pass through (both directions) UDP broadcasts on port 6163.]

Once the clock has a valid network configuration and the IP address is known, it can also be accessed via Telnet by computers in the same logical network.

In situations where providing basic network configuration via WinDiscovery application is not practical, the clock can also be configured through an RS232 terminal interface. To use this feature, connect an RS232 terminal (or PC serial port) to the DB-9 connector on the rear of the clock with a straight-through 9-pin cable. Use the communication settings: 8, N, 1, none. Once connected, press ENTER once to display the login/menu screen.

Display Behavior

The colons of the clock display will flash once per second when the device is unable to obtain time from an NTP source. If this condition persists for 24 hours (by default) then dashes will be displayed. When NTP time is available and valid, the colons will remain steady-on. Normal (preferred operation) is a display with the colons steady on, indicating that the clock is synchronized.

[Note: The flashing colons and/or dashes are a normal visual status indication alerting the user that the clock is not synchronized to the NTP server.]

PM Indicator: If the NTD is configured for a 12-hour time display mode, an LED indicator will appear in the bottom right corner of the display during the PM hours.

Major Feature Overview

The network clocks can be configured using one of the following:

- *WinDiscovery* software application provided with your clock
- Telnet (once IP address is known or configured)
- RS-232 terminal-style interface (such as Windows™ *HyperTerminal* application)

Consult the section entitled Configuration for details on how to adjust settings through the aforementioned mediums.

DHCP/BOOTP Auto-Configuration

DHCP (Dynamic Host Configuration Protocol) is a mechanism for automating the configuration of networked devices that use TCP/IP. When DHCP is enabled, DHCP configuration acquisition will overwrite any manual configuration items. A precursor to DHCP is BOOTP. The NTD can obtain configuration from a BOOTP server when no DHCP server is present. ***Factory default: DHCP enabled.***

The following RFC2132-defined optional configuration items are, when available, used by the NTD clock for configuration purposes:

Option	No.	Comments
Time Offset	2	The value provided will be used for the time zone offset configuration, unless it is defined as zero in which case it will be ignored and the NTD will rely on internal configuration. Note: this option does <u>not</u> provide information appropriate for dynamic daylight savings time use.
Router	3	The first IP address provided will be used for router/gateway configuration.
Domain Name Server	6	Up to two server IP addresses may be specified. NTD clock will treat addresses as primary and secondary DNS servers.
Network Time Protocol Server	42	Up to two server IP addresses may be specified. NTD clock will treat addresses as primary and secondary NTP servers.

[Important Note: A network clock will not function properly if configured to use DHCP services when no DHCP server is present on the network.]

Device Name/DHCP Name Registration

All NTD network appliances can be provided with a device name. By default, device names are the product name abbreviation followed by the last octet of the device's Ethernet address (MAC address). If a DHCP server is available on the network when the NTD clock is installed, the unit will be auto-registered with the DHCP server. The network system administrator can then view this DHCP name registration and the currently assigned IP address, at the DHCP server.

The user or network system administrator may wish to designate device names relating to their own organizational requirements. It is recommended that a robust naming scheme be developed before devices are installed to different locations within an organization.

The device name may be changed from the factory default name by entering a unique name of up to 32 characters. *[Hint: You can change the device name to one convenient for your site – preferably one that helps you to later identify the exact physical location of the device. Up to 32 character device names are supported]*

[Note: The IP address of the unit is required to configure the NTD clock with Telnet.]

[Helpful Hint: The DHCP server can be utilized to provide the IP address of the associated device name that is registered.]

Time Zone Offsets

All network clocks maintain time as UTC (UTC is sometimes equated with or referred to as GMT) internally. A time zone offset (or bias) can be provided to adjust the time for display purposes. A bias can be set as a positive (+) or negative (-) value with a resolution of one second.

[Note: Factory default: Time Zone Offset configuration for displaying local time is disabled. You must enable and configure the settings to display local time.]

[Note: It is highly suggested to utilize an NTP time server with UTC reference and configuring the offsetting for your time zone and DST in your local time display clock.]

Daylight Saving Time

A daylight savings time (summer time) adjustment can be configured separately and in addition to a time zone offset.

Network time displays provide flexible configuration options supporting most world daylight time standards.

Daylight time standards vary widely throughout the world. Traditional daylight/summer time is configured as one (1) hour positive bias. The new US/Canada DST standard, adopted in the spring of 2007 is: one (1) hour positive bias, starting at 2:00am on the second Sunday in March, and ending at 2:00am on the first Sunday in November. In the European Union, daylight change times are defined relative to the UTC time of day instead of local time of day (as in U.S.). European customers, please carefully consult the section entitled Device Settings for details on setting daylight time.

To ensure proper hands-free year-around operation, the automatic daylight time adjustments must be configured using the daylight time option and not with the time zone offset option.

[Note: Factory default: Automatic daylight savings time is disabled. You must enable and configure the settings to display local time with DST.]

NTP Addressing Modes

Unicast (Query)

The network clock supports the unicast method of NTP packets transfer. Unicast method involves direct transfer of requested information from the NTP server to the NTP client based on a query or NTP time request. The unicast method is supported simultaneously when either the broadcast or multicast modes are selected.

Broadcast

The network clock supports the broadcasting of NTP packets. This feature is useful in situation where network administration may wish to avoid the network traffic created by a large number of clients making periodic NTP requests, or in situations where such periodic requests end up synchronized in such a manner as to exceed the NTP100's ability to reply. The broadcast mode is a widespread or open-ended broadcast, not intended for any specific IP address.

The NTD clock listens for NTP [UDP] broadcasts using the broadcast address [255.255.255.255].

[Note: some firewalls and routers will not forward UDP broadcasts by default. Security configurations may need to be adjusted to allow the UDP broadcast packets to pass on the configured port.]

Multicast

The network clock also supports multicast addressing of NTP packets as a recently added feature. As opposed to broadcast mode, which is, a widespread or open-ended broadcast of NTP packets whereby data is sent to every possible receiver (client), multicasting is useful because it conserves bandwidth. It does this by replicating packets only as needed within the network to send them only to receivers (clients) that want them, thereby not transmitting unnecessary packets.

The concept of a group, and group membership, is crucial to multicasting. Every multicast requires a multicast group; the sender (or source) transmits to the group address, and only members of the group can receive the multicast data. A group is defined by a [Class D](#) address.

The network clock does not restrict the use of the multicast address assignment and supports the full range of class D multicast addresses or groups from 224.0.0.0 to 239.255.255.255. These groups or class D address ranges for multicasting are defined and governed by [RFC3171](#), [IANA IPv4 Multicast Guidelines](#).

Typically, the multicast address range 224.0.1.0 - 224.0.1.255 (224.0.1/24) [Internetwork Control Block] is utilized for NTP traffic, however, please refer to the [RFC3171](#) for your specific application and implementation.

The Internet Group Management Protocol (IGMP) is a protocol that controls group membership for individual hosts. This protocol only operates in a LAN setting, but is required if you wish to be able to join a multicast group on a host. IGMP is defined in [RFC 2236](#).

[Note: Use of the multicast addressing method requires the use of routers & switches and other network devices which support the Internet Group Management Protocol (IGMP). In addition, the IGMP mode

must be enabled and configured for multicasting addressing to be implemented properly. Please ensure that your network system components are capable of, and configured properly for IGMP before utilizing the multicast addressing feature. Consult you IT/network administrator for assistance in utilizing the multicast addressing feature.]

[Note: You will need to check with your firewall vendor to determine how to enable multicast traffic through a firewall. In addition, you may want to read [RFC 2588: IP Multicast and Firewalls](#).]

Anycast

The network clock does not currently provide anycast capability.

Configuration

The network clock ships from the factory with most software configuration offset options in the OFF setting, in order to display UTC time.

This factory default configuration is defined as:

- DHCP/BootP provided network configuration - Enabled
- DHCP provided NTP server address entry - Enabled
- Query (Unicast) NTP client -Enabled
- Time zone offset - Disabled
- Automatic Daylight Saving Time Adjustment - Disabled
- Telnet access – Enabled
- Display dashes when not synchronized to an NTP time server (after 24 hrs – default) - Enabled

Reset Factory-Default Configuration

In some situations (such as a lost password) it may be necessary to return the network clock to its factory default configuration. A reset configuration button labeled “RESET” is located on the electronics cover on the rear of the network clock chassis, to perform this function.

To reset configuration to factory default –

1. Depress and hold the reset configuration button on the rear of the clock.
2. Remove power from the device, while continuing to hold the reset button down.
3. Apply power to clock and continue holding the reset button down for five seconds.
4. The network clock device configuration will now be reset, including the password, and the unit will need to be reconfigured.

Default Password

The factory-default password for the network clock is: “*public*”

Configuration Methods

Basic operation of the network clock is configured via the WinDiscovery software supplied with the clock, or via Telnet if the IP address of the clock is known, or via the RS-232 interface. Only one configuration method should be used at a time.

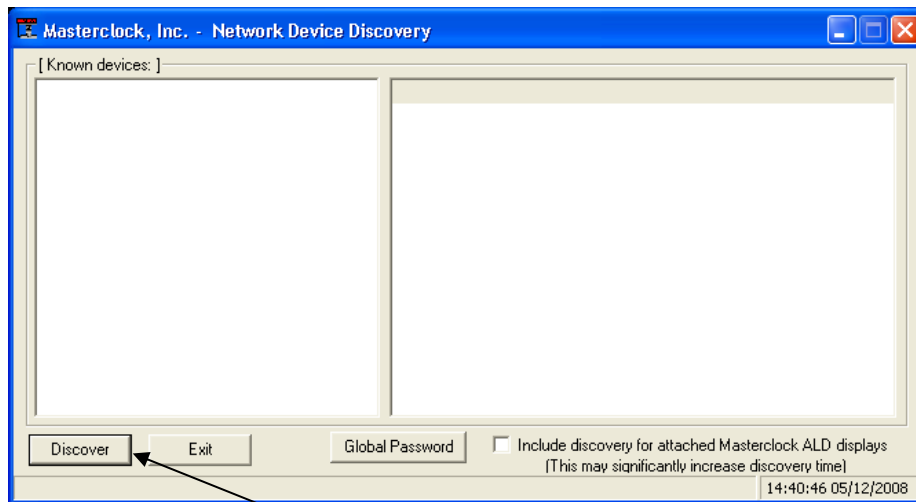
WinDiscovery

The WinDiscovery (WD) program is a Windows based program supplied with the network clock. WinDiscovery is currently supported under Windows 2000/XP/2003 Server/Vista operating systems. To install the WinDiscovery program on your server/workstation/PC, complete the following steps:

1. Insert the software CD that shipped with your network clock.
2. Run the 'setup.exe' application from the CD. *[Note, if you have your Windows OS configured to autorun applications from a CD when installed, this process will be automatic.]*
3. By default, the setup utility will suggest installing files to C:\Program Files\Masterclock\WinDiscovery. (Another path may be selected if desired.)

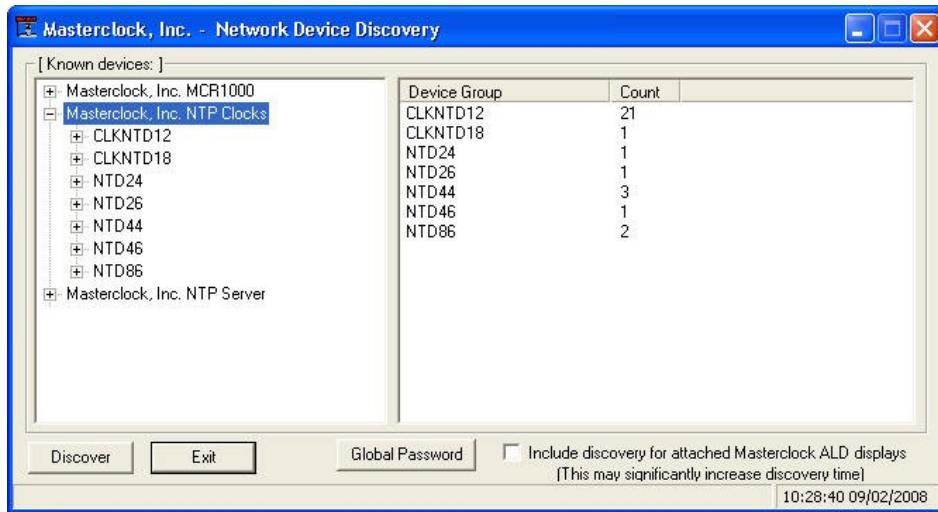
Using WinDiscovery

Open the WD program by clicking the shortcut on your desktop (or other fashion dictated by your installation). Only one user should be using WD at a time, and other methods should not be used to manage the network clocks while using WD.



Click the *Discover* button on the lower left of the screen.

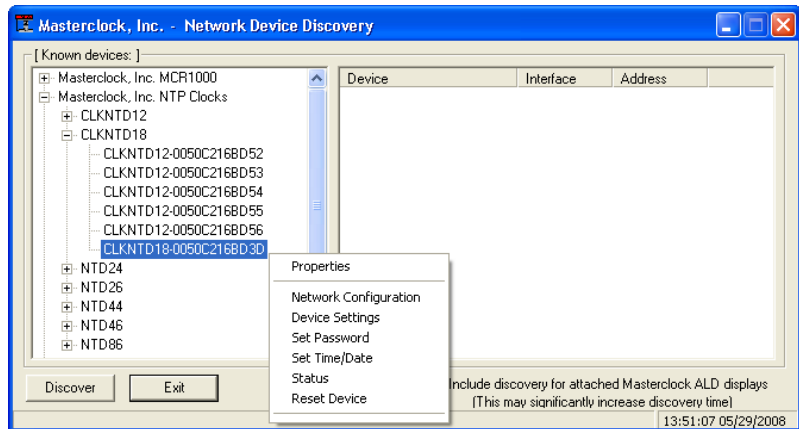
All Masterclock, Inc. network appliances accessible on the network will announce their presence. The real-time status bar will display the count of devices found. When complete, a list of device families and groups will be displayed in the left pane of the WD window. NTD network clocks are digital time display members of the Masterclock, Inc. NTP Clock family. Click on the plus [+] sign to the left of any family or group to open and view device types that were found.



Clicking on any device group will list in the right pane of the WD window all devices of that type found. Only the devices shown in the right window can be managed. To configure another device group, click on the device name in the left window and the device names will then appear in the right window, ready to be managed.

To configure and manage a device, double click or right click the device name and a menu appears. The choices are:

- Properties
- Network Settings
- Device Settings
- Set Password
- Set Time
- Status
- Reset Device

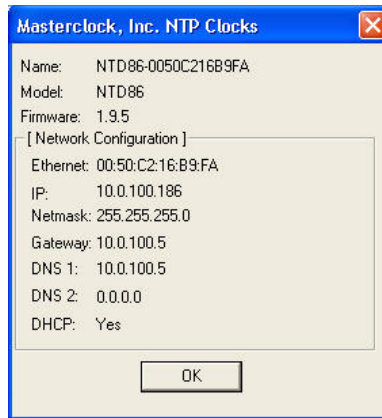


Clicking a menu choice opens a new window for that function. When working in the management windows, use the *Apply* and *OK* button to accept changes that you have made. Use the *Cancel* button to exit the screen without applying changes. NOTE: *Cancel* does not undo changes that have been saved using the *Apply* button.

The following sections provide detailed information regarding the right click menu options.

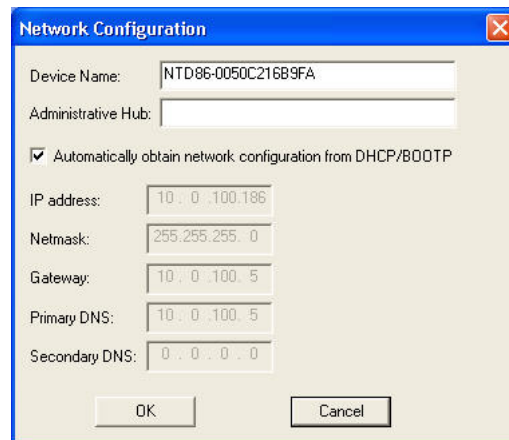
Properties

The network configuration may be viewed in a summary form under the *Properties* selection.



Network Settings

The network settings must be established for the clock to operate on the network. You must be a network administrator or have their support to complete these functions. Your network administrator determines the information for the Network Settings.



[Note: The default factory setting for network configuration is to use DHCP/BOOTP.]

[Note: If a DHCP server cannot be found on the network by the NTD clock, the IP address will be assigned a fallback IP address of 169.254.xxx.xxx]

To utilize static IP addressing, de-select the checkbox for “Automatically obtain network configuration from DHCP/BOOTP”. You must enter the IP address, Netmask, Gateway, Primary DNS, and may enter a Secondary DNS.

[Note: The static IP address you enter must not be in use by another device on the network, this includes IP address ranges reserved for use by the DHCP server. If a static IP address is used which creates a

duplicate IP address condition, the network clock will be re-assigned a fallback IP address of 169.254.xxx.xxx]

169.254.xxx.xxx IP (fallback) address

DHCP is enabled by default. If DHCP is enabled and no DHCP server can be found the NTD clock will default to a 169.254.xxx.xxx address.

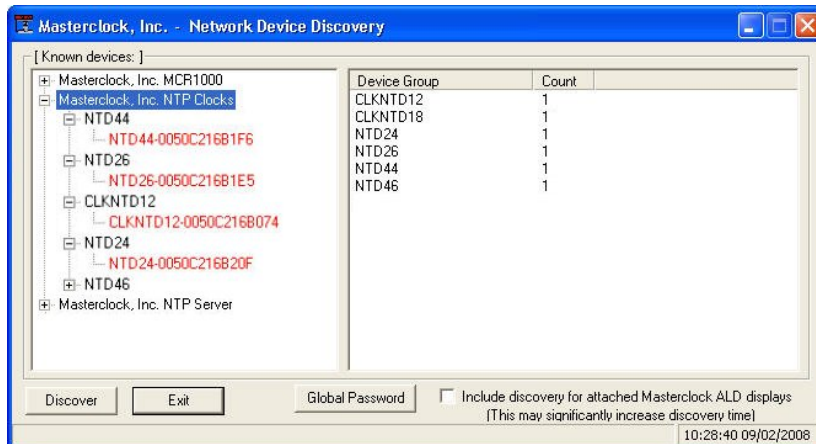
In addition, if an IP address conflict is determined when the Ethernet interface is initialized (either DHCP or static) the NTD clock will default to a 169.254.xxx.xxx address.

This 169.254.xxx.xxx is a link local address range (i.e. not allowed on the internet) and is used by Microsoft when their DHCP clients cannot find a DHCP server.

To determine the cause of why the clock fell back to a 169.254.xxx.xxx address the user should display the status of the clock.

Please see the “Status” section for details as to how to determine the cause of the fallback IP address.

[Note: Devices which have been assigned a fallback IP address of 169.254.xxx.xxx will be displayed in the main WinDiscovery window with RED text, indicating a problem with the configuration.]



Device Name

Each clock is programmed at the factory with a factory device name. This name includes the model name and a “MAC address” extension.

[Hint: You can change the device name to one convenient for your site – preferably one that helps you to later identify the exact physical location of the device.]

Administrative Hub

[Note: the Administrative Hub configuration item is reserved for future use.]

Device Settings

Each network clock can be configured to display time (or date) in the format that you prefer, using time zone offsets and DST settings to completely customize it relative to UTC time. The device settings window will display the title “NTP Clock Configuration” in the title bar of the window.

Any changes made in this window will not be applied until you click the OK button to exit the window or the Apply button to immediately see the changes.

The top right section of the Window shows a snapshot of the NTD display, constantly updated. This update is not precise, but is meant to give you a view of the clock display for troubleshooting and maintenance purposes.

Network Time Protocol [NTP] Parameters – Allows for setting the NTP mode and parameters of the SNTP client in the network clock. These settings are located in the upper left hand section of the device settings window

The Primary Source information must be configured in order to acquire time from an NTP source. Enter either the IP address or Internet address (URL) for the NTP source. If available, enter a Secondary Source for backup.

The primary and secondary server information can automatically be configured by the DHCP server when selecting the “Use NTP server(s) address provided by DHCP server” provided your DHCP server is configured to do so. Consult your IT /Network Administrator to utilize this option.

The screenshot shows the "NTP Clock Configuration" window. It is divided into several sections:

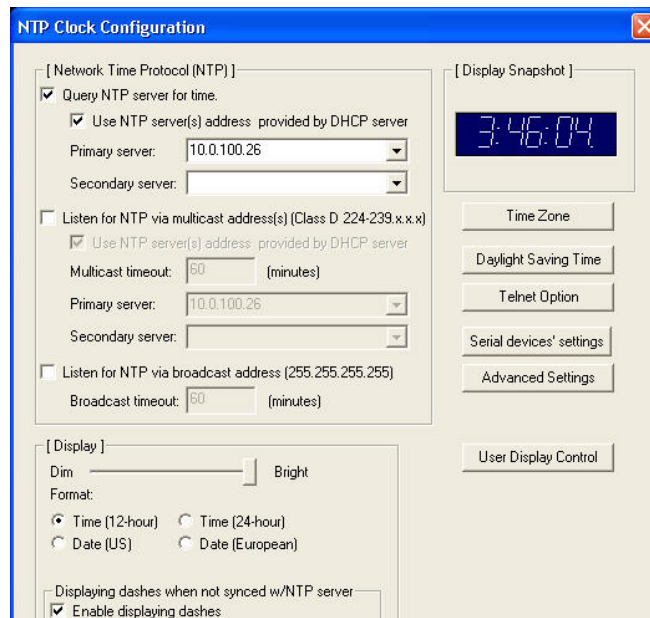
- [Network Time Protocol (NTP)]**:
 - Query NTP server for time.
 - Use NTP server(s) address provided by DHCP server
 - Primary server: 10.0.100.26
 - Secondary server: [empty]
 - Listen for NTP via multicast address(s) (Class D 224-239.x.x.x)
 - Use NTP server(s) address provided by DHCP server
 - Multicast timeout: 60 (minutes)
 - Primary server: 10.0.100.26
 - Secondary server: [empty]
 - Listen for NTP via broadcast address (255.255.255.255)
 - Broadcast timeout: 60 (minutes)
- [Display Snapshot]**: Shows a digital clock display with the time 3:46:04.
- [Display]**:
 - Dim slider: Bright
 - Format:
 - Time (12-hour)
 - Time (24-hour)
 - Date (US)
 - Date (European)
 - Displaying dashes when not synced w/NTP server:
 - Enable displaying dashes
 - 24 Hours to wait before displaying dashes (0-240)
- Buttons on the right: Time Zone, Daylight Saving Time, Telnet Option, Serial devices' settings, Advanced Settings, User Display Control.
- Buttons at the bottom: Apply, Apply and Close, Cancel.

The default, well-known port for NTP service is 123. This can be changed as desired (using the Telnet application).

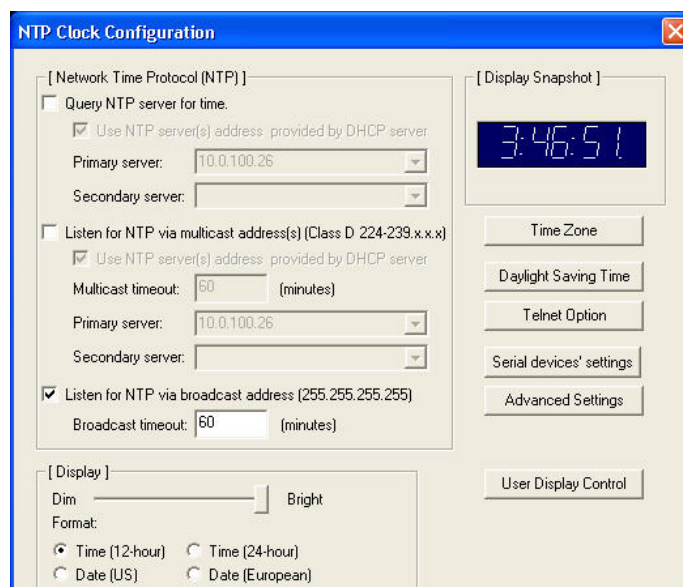
[Note: some NTP/SNTP servers will expect NTP clients to operate on port 123 and cannot be configured to utilize alternate ports.]

Query NTP server for time (Unicast Mode for NTP) - By default, the NTD clock will operate only in Unicast /Query mode using server port 123.

This mode is selected exclusively when neither the listen for NTP broadcast nor the listen for NTP multicast modes are selected.



Listen for NTP broadcasts – The network clock can be configured to listen to NTP broadcasts by selecting the “Listen for NTP via broadcast address [255,255,255,255]” checkbox.



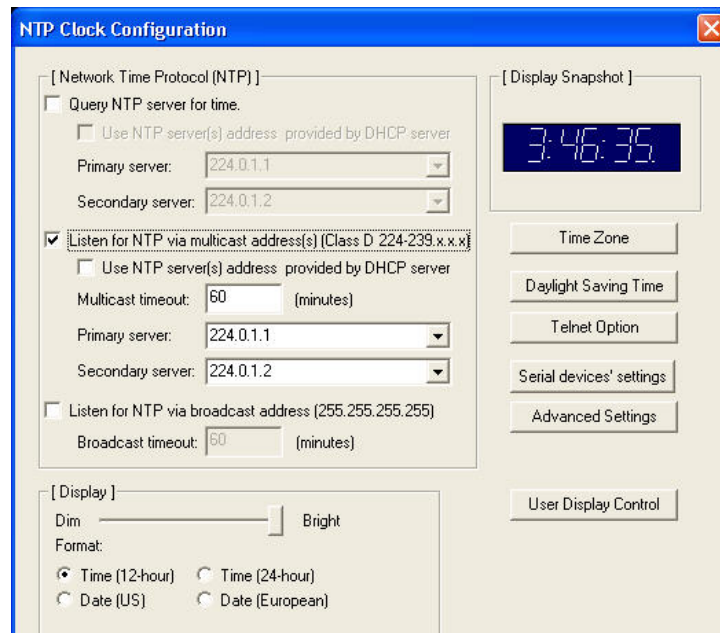
The Broadcast/Multicast timeout period (in minutes) is adjustable when this mode is selected.

[Note: While listening to NTP broadcasts, the network clock cannot query the time server.]

[Note: Some NTP/SNTP clients will expect NTP servers to operate on port 123 and cannot be configured to utilize alternate ports.]

Listen for NTP via Multicast Address

The network clock can be set up to listen to NTP using multicast addressing by selecting the “Listen for NTP via multicast address(es)” checkbox.



When enabled, the multicast class D / group address may be specified as well as the frequency that multicast broadcasts will be issued. This can be changed as desired. The NTD clock can listen for NTP multicast broadcasts using the full class D / group address range. The NTD clock does not restrict the use of the multicast address assignment and supports the full range of class D multicast addresses or groups from 224.0.0.0 to 239.255.255.255. These groups or class D address ranges for multicasting are defined and governed by [RFC3171](#), [IANA IPv4 Multicast Guidelines](#).

Typically, the multicast address range 224.0.1.0 - 224.0.1.255 (224.0.1/24) [Internetwork Control Block] is utilized for NTP traffic, however, please refer to the [RFC3171](#) for your specific application and implementation.

[Note: While listening to NTP broadcasts/multicasts, the network clock cannot be configured to query the time server.]

[Note: Some NTP/SNTP clients will expect NTP servers to operate on port 123 and cannot be configured to utilize alternate ports.]

The network clock can be configured to either listen to NTP multicast or broadcasts only, or to query the NTP time server at a selected interval. The default configuration is to query the NTP server at 10-minute intervals. To configure the NTD device to only listen to NTP broadcasts, click the checkbox for “Listen for NTP broadcasts only”, and enter a “Broadcast timeout” in minutes. The default timeout is 60 minutes.

Display Control

The lower half of the window configures the time/date displayed on the clock. The brightness control is a sliding bar to vary the brightness of the clock. This feature is useful to accommodate lighting conditions and viewer needs.

The six digit (NTDX6) clocks can be configured to display time in 12 or 24-hour format, or date in MM:DD:YY, indicated as US, or DD:MM:YY, indicated as European format.

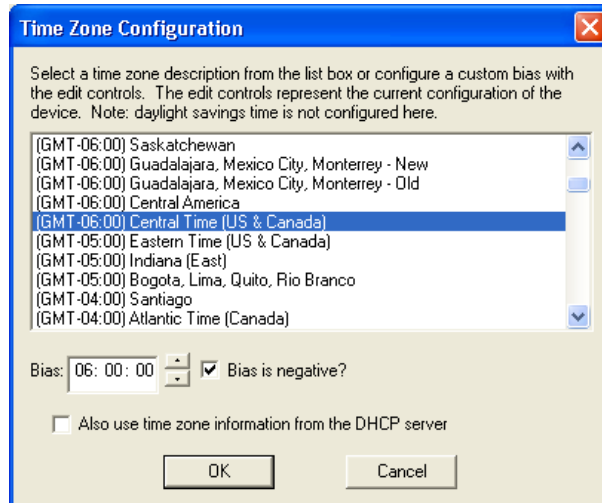
The four digit (NTDX4) clocks can be configured to display time in 12 or 24-hour format (hh:mm).

The network clock will flash its colons at a rate of 1 Hz (once per second) when it is not synchronized to an NTP server. This is the default configuration for the display if it is not synchronized to an NTP time server. It will continue to display time using its internal battery backed RTC (real time clock) while flashing its colons.

The network clock may be configured to display dashes to indicate that the unit is not synchronized to an NTP time server. To enable this feature, select the “*Enable displaying dashes*” checkbox of the *Display dashes when not synced w/NTP server*” category. The time delay for displaying dashes can also be adjusted (in hour increments).

Time Zone Settings

The Time Zone button included in the right half of the window, gives the clock complete flexibility to display any time zone. First select the time zone, by clicking the Time Zone button. This opens a new window that gives you a list of time zones, including descriptions to help with the selection. Select the Time Zone and click *OK* to close the window. Changes are not applied until you click *OK* or the *Apply* button on the main Configuration window.



Daylight Saving Time Settings

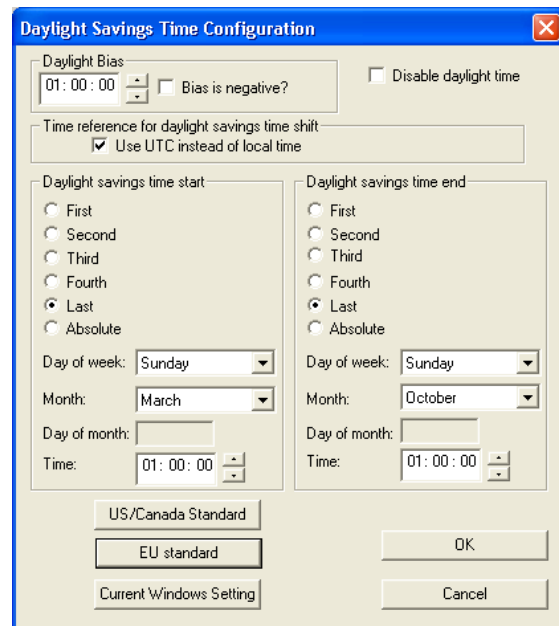
The Daylight Saving Time button, also included in the right half of the window, give the clock complete flexibility to display any time zone and DST combination. First select the time zone, by clicking the Time Zone button as described above. Next click the *Daylight Savings Time* button to configure the Daylight Savings Time, if appropriate.

You may use either of the following options are available for setting the DST rules.

- manually enter the daylight saving time rules.
- select the convenient preset DST rules for “US/Canada Standard” button
- select the convenient preset DST rules for “EU Standard” (European Union) button
- select the convenient “Current Windows Setting” button to apply the DST rules as currently configured for your current Windows OS.



US/Canada DST standard [adopted Spring 2007]

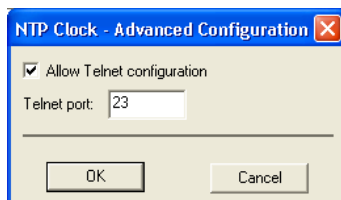


EU DST standard

Click *OK* to close the Window. The DST rules will be applied when you click *OK* or *Apply* on the main Configuration window.

Telnet Option

The *Telnet* button adjusts Telnet configuration. If Telnet is allowed, the port must be defined. The default Telnet port is 23. See your network administrator if you need additional information.

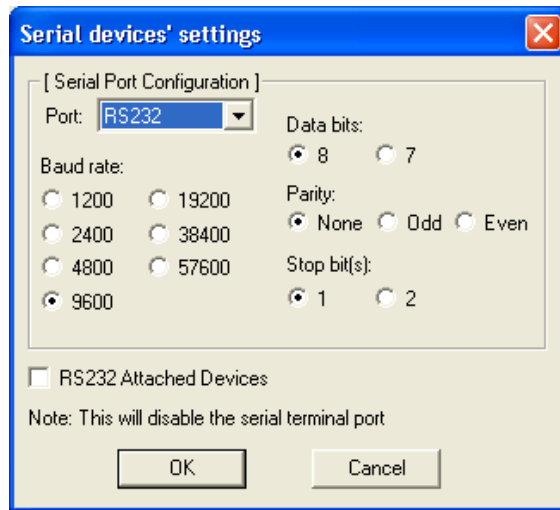


Serial Port Option Parameters

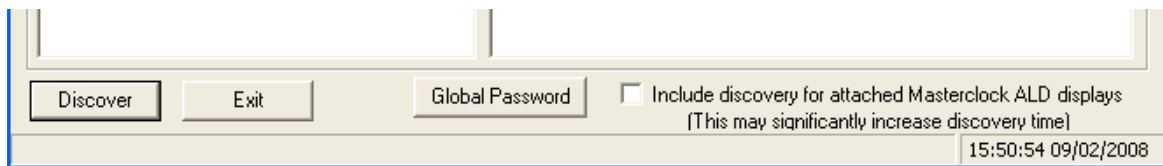
The NTD clock contains both an RS232 and RS485 serial port. These ports may be used in conjunction with supported serial port devices to create a network addressable hardware device using the NTD clock as an NTP interface.

A Serial devices settings button is included for setting up the RS232 or RS485 serial port communications. These ports are automatically configured as disabled by default at the factory for standard operation.

[Note: it is not necessary to enable the serial port interface to utilize the serial port for configuration purposes. The serial port interface will operate by default for configuration of the network clock.]



WinDiscovery can be used to detect, address, and configure the supported serial port hardware device. Enabling the detection of the network addressable device using WinDiscovery requires that the checkbox *Include discovery of attached Masterclock ALD displays* of the main WinDiscovery window be selected .



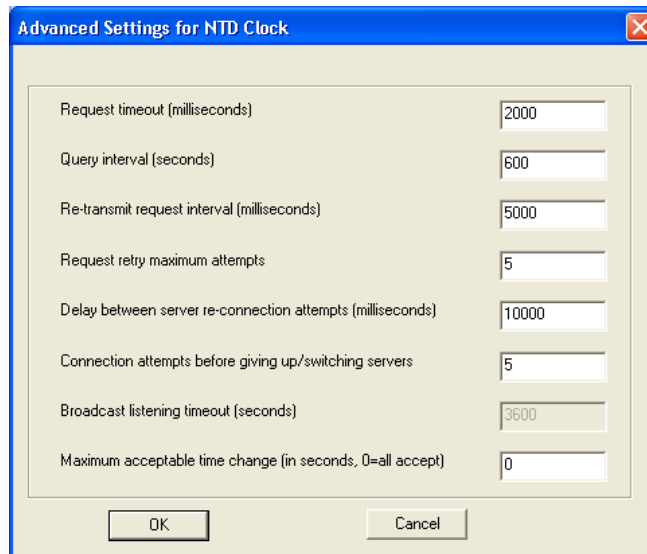
[Note: Enabling serial port detection of attached devices by selecting the checkbox will disable the serial port Telnet interface. To re-enable the serial port Telnet the checkbox must be cleared using WinDiscovery, or the unit must be RESET to factory default.]

[Note: Enabling serial port detection of attached devices by selecting the checkbox will significantly increase the time to discover the network clocks. It is highly suggested to disable this option unless your network is configured with the special serial port hardware devices]

[Hint: If you are having difficulty discovering attached Masterclock serial port devices that you have added to your network clock system, open the firewall and/or port control on your routers/switches to the additional ports 6165 and 6166 for bidirectional UDP messages to include the RS232 and RS485 devices.]

Advanced Settings

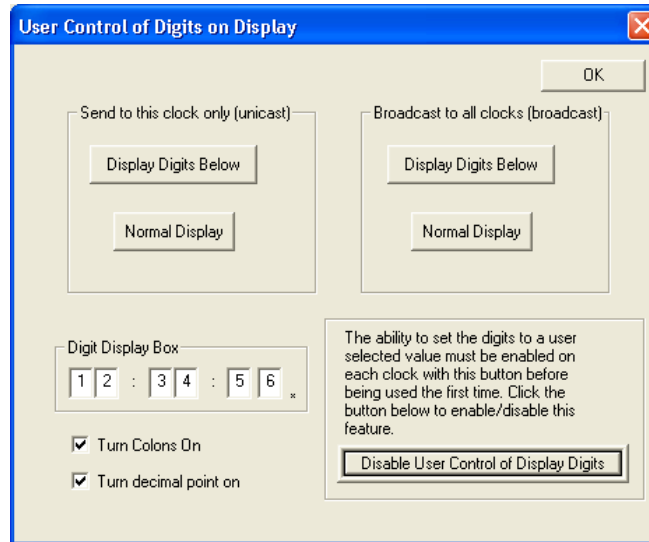
The *Advanced* button allows for the adjustment of additional network communication settings. Under most typical operating circumstances it is not necessary, nor is it suggested to change the advanced settings options.



[Hint: If the advanced settings have been altered for your clock and you begin experiencing difficulty in getting your clock to synchronize to the NTP time server, or the clock begins acting erratically, such as performing soft restarts; try returning the advanced settings to the default values shown above.]

User Display Control

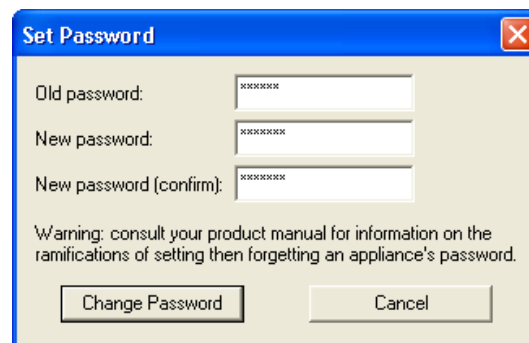
The *User Display Control* button allows for the enabling and utilization of an additional special user mode control. This special operational mode bypasses the display of time obtained from the NTP server and places user controlled alphanumeric characters on the display. Under most typical operating circumstances it is not necessary nor is it suggested to enable or utilize these settings.



Set Password

The third option on the clock configuration pull down menu allows you to set a password for each individual device. The password must be entered twice to confirm the entry. The password is a maximum of 11 characters and a minimum of 1 character, and is case-sensitive. Click the OK button to save the password or cancel to discard the change.

Warning: If the password is lost, the user must reset the clock using the Reset button on the rear of the clock. This will cause the clock to return all configuration to factory-default settings.

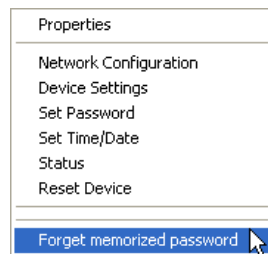


When a password is set for a clock, each time you click OK or Apply for that clock you will be asked for the password. You may create a unique password for each clock. You may enable the

'Remember this password for the session' checkbox to eliminate typing the password for each configuration change.

WinDiscovery will not remember or store the password (s) after the session is closed. It is important for the user/system administrator to maintain passwords in a safe place.

If you enter the wrong password and selected the "remember password" checkbox, you will receive an error upon selecting OK or Apply to any configuration changes. You can close the WinDiscovery session to "forget" the password(s), however this will require entering the password again for each device. Alternately, you can remove the incorrect password entry during a WinDiscovery session by going to the right click menu for the device and selecting Forget memorized password option. This option will be added to the right click list and will only be displayed if a password is memorized.



[Note: the factory default password is: "public"]

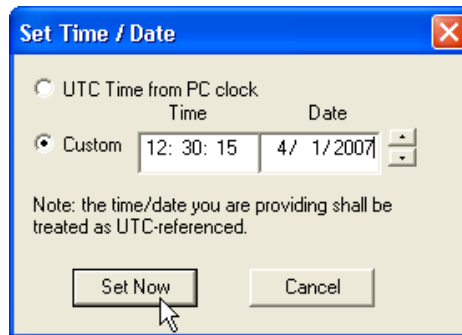
[Hint: To remove password protection for a clock, select the Set Password command. You will be prompted to enter the old password. Enter the old password. Do not enter anything into the New Password or Confirm Password fields. Click OK to save. Upon you next session, you will not be prompted for a password for the clock.]

Set Time

The Set Time right click menu item is a special advanced feature designed to allow the user to manually set the time and date for the clock for use in the absence of an NTP time server.

[Important Note: DO NOT use this method for network clocks that will have access to an NTP time server. This clock will self adjust to the UTC time reference provided by the NTP time server, plus any Time Zone and DST offset settings that have been configured. To configure the time displayed on the face of the clock , refer to the previous sections for configuring the IP address, NTP time server(s), Time Zone, and DST settings.]

The time can either be set to the time of the PC running WinDiscovery or a manual time and date may be entered. The function may be most useful for lab situations as the clocks keep time via their internal precision oscillator when NTP is not present.



[Note: When the network clock has access to NTP servers, information obtained via NTP will overwrite any manually established time/date.]

Practical use of this feature requires the clock to be removed from the network, or for NTP server configuration to be left undefined.

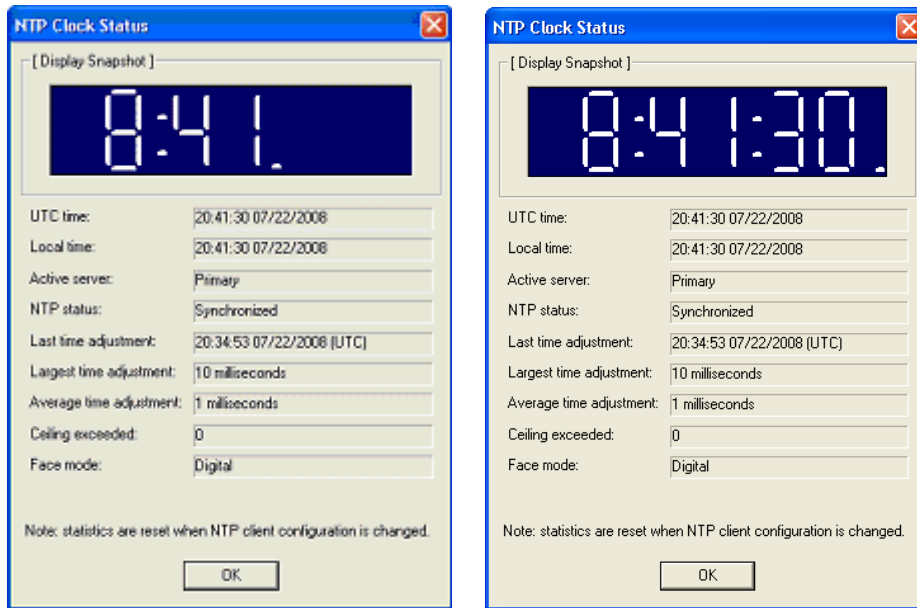
[Note: for the purpose of maintaining its internal clock, the network clock always assumes the time entered is UTC and saves this information as the internal UTC time. Any configured time zone/daylight time settings will then be applied to this internal time for the clock time display purposes.]

Status

The Status window is a display-only window that gives you the current information on the network clock's display and synchronization activity. The status window shows a snapshot of the network clock display. This status update is not precise, but is meant to give you a view of the clock display for troubleshooting and maintenance purposes. The Status also shows the active NTP server – Primary or Secondary, the current synchronization status, and Time Adjustment information. Time Adjustments may be caused by

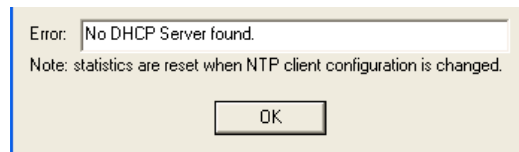
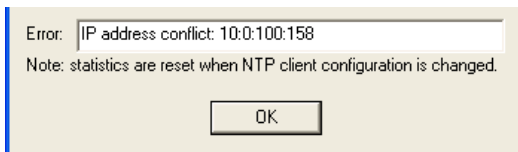
- loss of NTP,
- changing the NTP source, or
- changing Network Configuration settings
- power loss or cycling

The Ceiling Exceeded field describes the event where the time adjustment exceeded a value that will be set in the NTP Digital Clock Configuration - Advanced – Ceiling. Note: the statistics will reset if you change the NTP server.



Four (4) Digit and six (6) Digit Digital Clock Status screens

[Troubleshooting Tip: In addition to the standard status indications, the network clock will display a special error indicator under the status window if either a DHCP server cannot be located, or if the device has an IP address conflict due to either DHCP or Static IP addressing. Under these conditions the unit will also be assigned a fallback IP address of 169.254.xxx.xxx, and appear in RED text under the main WinDiscovery window. To determine the cause of why the clock received a 169.254.xxx.xxx address the user should display the status of the clock. Near the bottom of the Status window the error will be displayed. (If there is no error the error text box will not be displayed)]



Reset Device

The network clock may be reset with a soft reset to allow the device to clear its current communications buffer and re-initialize its processing, includes re-requesting of a DHCP address. This feature is intended to allow the user to remotely reset the unit. This feature does not restore the unit to its factory default state. Simply right click on the clock you are interested in a select “Reset Device”.

Soft Restarts

A soft restart may periodically be performed by the network clock to automatically attempt to rectify a problem it may be experiencing. A soft restart is essentially the same as performing a manual soft reset device as described above.

The NTD clock will perform a soft restart under the following conditions:

- If the clock is not receiving an NTP poll response or an NTP broadcast response depending on which mode the NTD clock is in.
- If the clock is set to use DHCP and no DHCP server can be found.

The timeout before doing a soft restart is no less than every 10 minutes. Several factors can increase the time between these soft restarts.

- The soft restart will be delayed by two hours if a connection is made by telnet or a discovery by WinDiscovery.
- The soft restart is delayed if the user changes the default parameters for NTP poll retries/timeouts or the NTP broadcast timeout. For example, if the NTP broadcast timeout is increased to 60 minutes the soft restart timeout will also be increased to 60 minutes.

Telnet Terminal Configuration

A terminal-style configuration interface is available via Telnet. To connect with the NTD in this manner use any standard Telnet client application, specifying the IP address of the clock as the server with which to connect. The factory default port is well-known telnet server port 23.

Configuration via Telnet may not be convenient for devices operating with a factory default configuration since the IP address is not known. Use the WinDiscovery application or the RS-232 interface to establish first-time networking configuration.

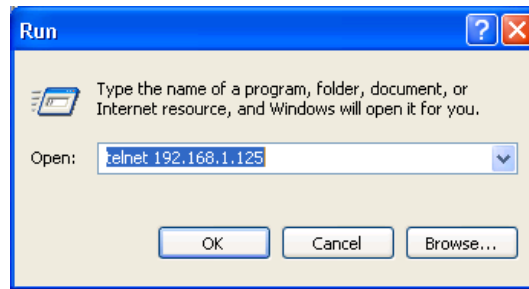
[Helpful Hint: If a DHCP server is available on the network, The DHCP server can be utilized to provide the IP address of the associated device name that is registered.]

The following sections provide basic descriptions of using the Telnet interface of the network clock. Please refer to the previous Using WinDiscovery sections for additional details and important operational information regarding the special features and modes of the network clock.

[Note: for security purposes, the Telnet interface can be disabled. When disabled, you will no longer be able to access the device with Telnet. To re-enable the Telnet feature, one of the other configuration methods must be used, or the clock must be reset to factory default configuration.]

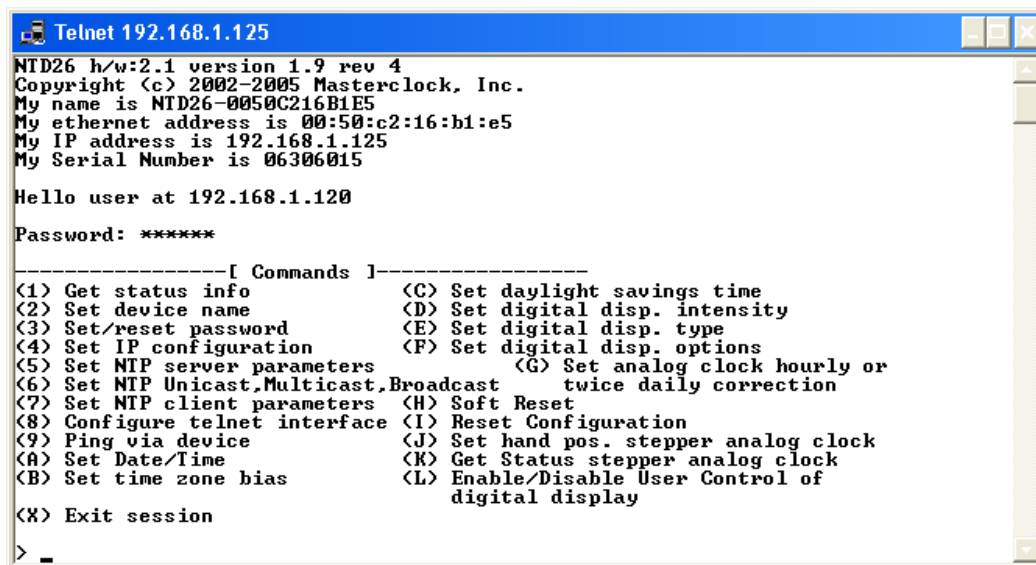
If you are not familiar with the Telnet application, ask your network system administrator for assistance.

To initiate a Telnet session in Windows, select the *Run* Command Line interface from the Start menu and enter the command “telnet” followed by a space, and then the IP address of the unit.



[Note: for security purposes, the Telnet interface can be disabled. When disabled, you will no longer be able to access the device with Telnet. To re-enable the Telnet feature, one of the other configuration methods must be used, or the clock must be reset to factory default configuration.]

Upon entering the network clock via Telnet, the initial screen is shown below. The clock displays its firmware version, its name, Ethernet address, IP address, and the IP address of the PC with which you are accessing it. A login prompt is presented if a password has been configured for the device. The configuration menu will be displayed when the correct password has been provided.



Enter the Number or Alpha Letter corresponding to the command desired and press the enter key. Current configuration or default answers are displayed in brackets. Depressing the ‘Enter’ will retain the current entry/default.

Get Status Info

Select this menu option to query the device for parameters relating to the clock’s current status. This includes information regarding the clocks reference to UTC, local time, displayed time, whether it is synchronized, and its NTP server.

Set Device Name

To set the device name, select this menu option. Enter the desired device name.

Set/Reset Password

To set, change or remove the password, select this option. Bear in mind that a lost/forgotten password cannot be recovered [unless a reset to factory default settings is performed].

[Note: the factory default password is: “public”]

[Hint: To remove password protection for a clock, select the Set Password command. You will be prompted to enter the old password. Enter the old password. Do not enter anything into the New Password or Confirm Password fields. Click OK to save. Upon your next session, you will not be prompted for a password for the clock.]

Set IP Configuration

To set the IP Configuration, select this menu option. **NOTE: If you select this option, you will be disconnected from the session upon completion, whether you actually change any entries or not.** You have the choice of using DHCP for automatic IP Configuration or entering the data in these screens for Static IP addressing. By factory default, the clock is set to DHCP address mode.

If you select DHCP, no other questions will be displayed, you will be disconnected from the session, and you will not be able to Telnet to this clock until you learn the DHCP-provided IP address. The WinDiscovery network device management tool can be used to determine the IP address of the clock. To manually enter the static address IP information, enter ‘N’ for the DHCP (or Enter for the default), and enter the IP, Netmask, Gateway, Primary DNS and Secondary DNS server.

Set NTP Server Parameters

The network clocks support a Primary and a Secondary NTP source in static IP addressing mode. Select this option to setup or change the NTP reference sources. Enter the name or the IP address for the NTP reference server. Enter the server port for each NTP reference source (normally 123). Note that in DHCP addressing mode, the DHCP server will provide this information.

Set NTP Unicast, Multicast, Broadcast Mode

The NTD clocks are set by default to unicast mode [query] for NTP on a regularly scheduled basis, factory set to 10-minute intervals. To set the clock to receive broadcasts, set the NTP broadcast option to ‘yes’. To set the clock to receive multicast messages, set the NTP multicast option to ‘yes’. Enter the broadcast/multicast port (normally 123).

[Note: If the clock is set to receive broadcasts or multicasts, the clock will not query.]

To return the unit to unicast [query] mode reply ‘no’ for broadcast and multicast options.

Set NTP Client Parameters

The NTD clocks are set to query for NTP on a regularly scheduled basis, factory set to 10-minute intervals. To adjust the settings for query interval and additional broadcast /multicast NTP client parameters select this option. Note, these settings are considered advanced settings and under most typical operating circumstances it is not necessary nor is it suggested to change the advanced settings options. Please refer to the WinDiscovery “Advanced Settings” section for the default values.

Configure Telnet Interface

Select this option to turn off the Telnet access. If Telnet is allowed, define the Telnet port (normally 23). If turned off, the Telnet session will be ended and the user must use WinDiscovery, the RS232 access, or the Reset button to regain access by Telnet.

Ping Via Device

Allows the network clock to ping an IP/DNS address such as that of the NTP server. This is useful in situations where the communication link/path from the network clock to the NTP server is in question. [Note: this feature is not available under WinDiscovery]

Set Time

Allows UTC time and date to be set directly into the clock. This is useful in situation where NTP server synchronization is not available but reasonably correct time/date is desired on the display. When the NTD has access to NTP servers, information obtained via NTP will automatically overwrite any manually established time/date. Therefore, practical use of this feature requires the clock to be removed from the network, or for NTP server configuration to be left undefined.

Set Time Zone Bias

The Time Zone Bias indicates the offset from UTC. Enter the time in HH:MM:SS format as indicated, including the plus or minus sign to indicate positive or negative bias. Remember that this field can also be set from DHCP, so check with your Network Administrator if you are getting inexplicable results.

Set Daylight Saving Time Parameters

The DST configuration allows you to completely configure the DST (summer hour) settings for your location. To configure the DST, enter Y to ‘Perform Daylights Savings Time Adjustments’. For sites requiring US/Canada standard DST, you can indicate yes to the next question and the DST will be configured for you automatically. The new US/Canada standard adopted in the spring of 2007 is: 1 (one) hour positive bias, starting at 2:00am on the second Sunday in March, and ending at 2:00am on the first Sunday in November. If you select the US/Canada standard, the configuration is complete. If you indicate ‘no’ for the US/Canada, then you continue to configure the DST by entering the number of each option and completing the entries (masks are provided for required format of data):

- DST and standard time bias hour, with sign (DST normal bias is –01:00:00 hour, and standard time bias is normally +00:00:00)
- DST start point – can be set as absolute date, i.e. 03/11, or floating day, by entering Month such as 3 for March, Day of week such as Sunday, and week in Month, 1st, 2nd, etc.
- DST end point –can be set as absolute date or floating day

Set Digital Display Intensity

The digital clock display intensity is controlled with a scale of 1 to 14 with 14 being brightest. Enter the value for the desired intensity setting.

Set Digital Display Type

Allows configuration for time display (12 and 24 hour) for 4 and 6 digit clocks, or date display (MM/DD/YY or DD/MM/YY) for 6 digit clocks.

Set Digital Display Options

The digital clock display special options may be adjusted. This includes displaying dashes when an NTP timeserver is not present along with a delay function to display the dashes.

Set Analog Clock Hourly/Twice Daily Correction

[Note: This menu item feature has been retained for backward compatibility with a discontinued model of analog clock with AC synchronous only. This feature does not apply to the stepper motor analog clock, or digital clocks.]

Soft Reset

The network clock may be restarted with a soft reset command to allow the device to clear its current communications buffer and re-initialize its processing, includes re-requesting of a DHCP address. This feature is intended to allow the user to remotely attempt to clear issues with the unit. This feature does not restore the unit to its factory default state. This command is essentially equivalent to the right click menu item “Reset Device” under WinDiscovery and the automatic soft restart built into the clock.

Reset Configuration

The network clock may be reset from telnet. Use this command sparingly as it will reset the unit to initialize and utilize DHCP IP addressing mode by default, and will likely change the IP address of the unit, making the communication via telnet impossible until the new IP address of the unit is configured or known.

If this command fails to clear an issue with the clock, a hard reset may be in order to return the unit to its factory default state. In certain [rare] instances it may become necessary to access the configuration reset switch to return the network clock to its factory default settings or to recover from a non-responsive condition. Consult the section “Reset Factory-Default Configuration” under the “Configuration” section of this manual.

Set stepper hand position analog clock

[Note: this menu items applies to analog stepper motor models only.]

Get Status stepper analog clock

Provides status information specific to the analog stepper motor clock.

[Note: this menu items applies to analog stepper motor models only]

Enable/Disable User Control of Digital Display

The digital display clock may be used in a special user control mode allowing specific time/date/character information to be displayed, other than the actual time display mode based on the NTP server time. This mode is password protected.

[Note: this menu items applies to digital time display models only]

Enter X to exit the Telnet menu. This will disconnect your Telnet session from the clock.

RS-232 Terminal Configuration

The recommended method of configuring the NTD clock is via the network interface using either the WinDiscovery application or Telnet.

In addition, the installer may opt to configure or update the firmware for the device using an alternate method than the standard Ethernet port. A serial port interface has been included as a provision. This item can be accessed on the rear of the chassis.

The RS-232 configuration interface behaves identically to the Telnet interface. To communicate with the network clock in this manner connect any RS-232 terminal or PC serial port and serial terminal application such as Windows™ “HyperTerminal” to the 9 pin DB9 connector. A standard “straight-through” serial (non null modem) communication cable should be used.

The settings for the RS232 port are: 9600, 8 data bits, no parity, 1 stop bit, None

It may be necessary to restart the unit by recycling power to initiate the serial terminal configuration interface after the serial cable has been attached.

Once serial communications is initiated, a banner will be displayed. This banner message designates the clock model, firmware version, and IP address, followed by a password entry. The IP address may be announced as 0.0.0.0. This is normal operation. The clock has not yet configured or been assigned its IP address under DHCP mode prior to announcing or making available its serial interface user menu. You can reveal the IP address by refreshing the menu and announcement. To reveal the IP address, first enter the password. Select the exit option “X” from the menu. The initial clock announcement and the menu will re-fresh and the actual IP address will be displayed, if known.

Once connected, press ENTER once to display the login/menu screen.

Consult the section entitled Telnet Terminal Configuration for details on how to change configuration using the terminal interface.

Troubleshooting Tips

[Important Note: WinDiscovery uses bi-directional UDP messaging on port 6163 for both the discovery process and to communicate configuration and status packets to and from the Masterclock® network clock(s). Delivery of UDP messages/packets is not guaranteed. If you experience intermittent problems with WinDiscovery, try closing the current session and restart the application. If this does not resolve the issue try the following trouble shooting tips, or switch to an alternate method of configuration such as telnet.]

Problem: Unable to find [discover] the clock on the network with WinDiscovery.

Possible reasons/solutions:

1. The discovery process was not complete before selecting clock(s). After selecting “Discover” button, wait until the discovery status indicates 100% completion.
2. Verify that the clock is on the same physical network as the computer from which you are running WinDiscovery. If the computer is separated from the clock by a router (on a remote network) or a firewall it is likely that the router/firewall is blocking communication with the device. Run WinDiscovery from a computer within the remote network, or ask a network system administrator to configure the router/firewall in question to pass through (both directions) UDP broadcasts on port 6163 [Note: If this does not resolve the detection problems you may additionally configure to pass through both directions UDP broadcasts on ports 6165, 6166, and 6264].
3. Verify that the hub/router/switch is capable of supporting the 10MB speed that the attached network clock requires.
4. Verify that a DHCP/BOOTP server is present on the network. If the clock has been configured to use DHCP for network configuration but no DHCP/BOOTP server is present, the clock may not respond to discovery requests for up to twenty seconds after power-on. *[Note: DHCP configuration is enabled as a factory-default.]* In addition, the clock will reset its address (fallback) to one within the link-local address space (169.254.xxx.xxx) when no DHCP server is present or is not able to be reached. Reset the clock to initiate a new DHCP IP address request, or use static IP address mode. Consult your network system administrator to ensure that a DHCP server is present and accessible on your network and/or to obtain a list/range of available IP addresses.
5. Verify that the clock and the computer running WinDiscovery are attached to the network.
6. Verify that all network cables, hubs, etc. are in proper working order. Be sure that Ethernet crossover cables are not being used where inappropriate.

Problem: Clock was found using WinDiscovery, but the status display is intermittent or not updating and/or clock does not appear to be responding to configuration changes under the current WinDiscovery session.

Problem: Clock(s) previously found during a recent session of WinDiscovery do not show up during the current session.

Problem: The clock status or settings displayed under WinDiscovery show garbled characters.

Possible reasons/solutions:

1. The WinDiscovery application has been open for too long and the clock configuration(s) has(have) changed. For example, this can occur if the DHCP server has issued new/refreshed addresses. Close the WinDiscovery application and restart.
2. The discovery process was not complete before selecting clock(s). After selecting “Discover” button, wait until the discovery status indicates 100% completion.
3. Verify that the physical network cables and equipment and configuration for UDP have not changed.
4. Verify that you are currently the only user accessing the clock via WinDiscovery or telnet.
5. The network may currently be experiencing heavy traffic which is reducing bandwidth and/or causing collisions with the UDP messages/packets between the clock(s) and WinDiscovery. Since delivery of UDP messages are not guaranteed, this can cause WinDiscovery to not receive the latest configuration or status packets, and thus show outdated or garbled information. In some cases, the clock may not be discovered and displayed in the WinDiscovery device tree. In others, previously discovered clocks may no longer be accessible or responding.
 - Press the “Discover” button again and wait until the discovery process completes.
 - Close the current WinDiscovery session and restart the WinDiscovery application.
 - Take steps to increase the bandwidth and reduce network traffic.
 - If this is an ongoing problem, consider the Telnet configuration method or remove the clock system to an isolated LAN.

Problem: Clock appears in RED text under WinDiscovery device tree.

Problem: Clock is being assigned an IP address of 169.254.xxx.xxx

Problem: Clock not maintaining its assigned IP address.

Problem: Clock function is erratic. Clock periodically resets itself.

Problem: Clock is showing an “Error” field under the status window in WinDiscovery.

Possible reasons/solutions:

1. Incorrect network configuration may be causing the clock to receive a fallback IP address and or perform soft restarts. Verify that the IP address configured for the clock is correct. If you manually enter (or DHCP assigns) an IP address that already exists on the network, this will create an IP address conflict. The clock will reset its address (fallback) to one within the link-local address space. Determine the cause of fallback IP address and resolve issue. View the error status field under the status window to help determine the cause of why the clock received a 169.254.xxx.xxx. Near the bottom of the Status window the error will be displayed. (If there is no error the text box will not be displayed.)

[Note: Devices which have been assigned a fallback IP address of 169.254.xxx.xxx will be displayed in the main WinDiscovery window with RED text, indicating a problem with the configuration.]

When the Ethernet interface is initialized the NTD clock will verify that the IP address (either static or assigned by DHCP) is not being used by another device on the network. If a conflict is found the NTD clock will default to a 169.254.xxx.xxx address. The IP address that caused the error is saved and returned as an error to WinDiscovery. This error status is available to the user via the Status window on WinDiscovery.

- If static IP addressing is being used the original conflicting static IP address can be restored by doing a soft restart of the NTD clock using either WinDiscovery or telnet prior to changing any other configuration parameters.

[IMPORTANT NOTE: if the configuration of the network clock is changed while a 169.254.xxx.xxx is being used (for example: changing the Time Zone offset), then the current 169.254.xxx.xxx address will become the permanent static address and the original conflicting static address is lost. At this point, it is necessary to manually change the static IP address to a one that will not conflict, or you may do a “Reset Configuration” to restore the system to factory default settings.]

- If DHCP was selected and the NTD fell back to a 169.254.xxx.xxx address approximately every 10 [depending upon the “Advanced Settings” values] minutes the Ethernet interface will be reinitialized and the NTD clock will attempt to get an IP address from the DHCP server. If the NTD is successful, the error will be cleared and the new address from the DHCP server will be used. If a discovery was done using WinDiscovery or telnet was used this initialization will be delayed by 2 hours.

Problem: Clock is unable to find NTP reference, either Primary or Secondary Source.

Problem: Colons are continuously flashing once per second.

Problem: Status in WinDiscovery says ‘Unsynchronized’

Possible reasons/solutions:

1. Verify that the NTP server(s) specified are reachable, communicating, and are not flagging their reported time as invalid. Use a PC-based SNTP client application to verify the server(s) if necessary.
2. Verify that a gateway/router/firewall has been configured that allows the clock to communicate outside of its local network.
3. Verify that the IP address configured for the clock is correct. If you manually enter (or DHCP assigns) an IP address that already exists on the network, this will create an IP address conflict. The clock will reset its address (fallback) to one within the link-local address space (169.254.xxx.xxx). If you see that the IP address starts with 169.254, obtain a new IP address for the clock or resolve the duplication. Consult your IT/Network Administrator for a list/range of available IP addresses to avoid IP address conflicts.
4. If using DHCP mode, consult your IT/Network Administrator to ensure that your DHCP server is configured to automatically supply the NTP server address before selecting the “*Use NTP server(s) address provided by DHCP server*” checkbox. If the DHCP server cannot automatically supply the NTP server address(es), then deselect this option and enter the NTP server(s) address(es) manually.
5. Verify that the clock is connected to the Ethernet LAN.
6. Verify that all network cables, hubs, etc. are in proper working order. Be sure that Ethernet crossover “patch cables” are not being used where inappropriate.

Problem: Clock is not displaying the correct local time or date.

Problem: Clock did not properly negotiate the Daylight Savings Time to standard time (or vice-versa) transition.

Possible reasons/solutions:

1. Time zone offset has been configured incorrectly. Provide the correct time zone configuration.
2. Daylight savings time has been configured incorrectly. This is configured separately from the time zone configuration. Provide the correct daylight time configuration by either manually entering the daylight saving time rules or selecting the single button configuration under WinDiscovery. If using the convenient single button configuration for US/Canada or EU DST, be certain to use the latest version of WinDiscovery and apply it for each clock. The latest version of WinDiscovery will have the latest DST rules for the US/Canada and EU implemented. Or you may enter the DST rules manually. If using the “Current Windows Setting” button to apply the DST rules, verify that the rules on the computer are correct.
3. If using DHCP/BOOTP for network configuration, consult with your network system administrator to see if the optional *Time Zone* option has been changed. This option as provided by DHCP can override manual settings.
4. If you have used the Set Time function, note that the clock assumes that you have entered UTC and will apply your Time Zone and DST configuration relative to the manually entered time.
5. The NTP time server(s) is not available or the NTP server being used has the incorrect UTC time. Verify the NTP time server is available and is providing the correct UTC time.

Problem: Clock display appears to freeze momentarily.

Problem: Clock appears to ‘reset’ periodically.

Possible Reasons/solutions:

1. If DHCP is enabled [*Note: DHCP is enabled by default*] and a DHCP server is not active on the local network the clock will hesitate periodically while attempting to resolve DHCP configuration. To correct the problem, switch to manual networking configuration or determine why the local DHCP server is not operating.
2. If the clock cannot resolve its DHCP address in DHCP mode, the unit will periodically perform a soft restart to re-initialize its communication port and DHCP configuration. See the trouble shooting section on fallback IP address
3. If the clock has not been configured with at least one valid DNS server (or that DNS server is down) hesitations similar to those described in #1 will occur. At least one valid DNS server is required for operation.
4. If the clock does not have at least one valid NTP server address configured (primary NTP server) or the server is unreachable for extended periods the clock will periodically perform a soft reset to re-initialize its communication port and configuration.

Problem: Clock display shows only dashes.

Possible Reasons/solutions:

1. The clock display is not synchronizing with an NTP server and the display has been configured to display dashes. The time duration (delay) before displaying dashes has elapsed. Verify the NTP server address is valid and/or reconfigure the clock.

Problem: Colons are flashing for several seconds when I apply new configuration settings under WinDiscovery or Telnet.

Problem: Colons are flashing for several seconds at random times.

Possible Reasons/solutions:

1. This is also normal behavior each time new configuration settings are downloaded to the clock and saved using either WinDiscovery or Telnet.. During this time, the network clock will receive the new configuration settings and save them to its flash memory. The network clock then re-initializes (soft restart) and continues operation with the new settings. The only time to be concerned is if the colons do not stop flashing after several seconds.
2. This can occur if multiple users are using WinDiscovery/Telnet or both on the network, simultaneously. Verify that you are the only current user of WinDiscovery or Telnet, and/or that only you can administer , and/or that you have password protection enabled.
3. This is also normal behavior when the clock cannot reach the primary or secondary NTP time server during queries or the broadcast timeout has been exceeded. If the “Advanced Settings” have been altered, you may return them to there default values. See “Advanced Settings” section of WinDiscovery.

Problem: Clock display is frozen and is blank, has strange characters, or the time is not incrementing.

Possible Reasons/solutions:

1. The clock display may have been set using the User Control mode. Disable the user control mode and restore the clock to normal operation mode.

Problem: When using the serial port interface for configuration, during initial power up or after a reset the clock announces its IP address as: “My IP address is 0.0.0.0 “.

Possible Reasons/solutions:

1. This is normal operation. The clock has not yet configured or been assigned its IP address under DHCP mode prior to announcing or making available its serial interface user menu. You can reveal the IP address by refreshing the menu and announcement. To reveal the IP address, first enter the password. Select the exit option “X” from the menu. The initial clock announcement and the menu will re-fresh and the actual IP address will be displayed if known.

Problem:

You have lost your password.

Possible reasons/solutions:

1. The password cannot be recovered if it is lost. Reset the clock to the factory default configuration using the procedure described in the Configuration section. After the clock has been reset to factory defaults, the unit must be reconfigured. The default password is “*public*”

Problem:

Multiple error windows titled “Bad Password” continue to pop-up each time a configuration setting is applied.

Possible reasons/solutions:

1. You have entered and “remembered” an incorrect password in the password windows. This is now causing multiple error indication windows titled “bad password” to pop-up for each portion of the configuration message that is being sent to the clock. You must clear the memorized password using one of the two options below.
2. WinDiscovery only remembers the password for the current session, close the WinDiscovery session and reopen. All passwords will be forgotten by the WinDiscovery application.
3. As an alternative to closing the WinDiscovery session, Right click on the device being administered in the main WinDiscovery window. The right click pop-up menu now contains an entry for “Forget Memorized Password”. Select this option.

Problem: WinDiscovery is unable to find or administer/configure an attached serial port device such as an ALD118 or ALD216 alphanumeric display.

Possible reasons/solutions:



1. Verify that the attached device is compatible with and recommended for use with the network clock.
2. Verify that the correct device I.D/address is selected when using an ALD118; for RS232 communication set the address switches to use the port0 address. RS485 communication may utilize additional port addresses.
3. Verify that the serial port device is connected using the appropriate serial cable and or serial cable adapter. Consult the www.masterclock.com/support.htm for details.
4. Verify that a serial port settings for the clock that the device is connected to have been enabled and configured for that serial port and device type.
5. Verify that the selection box to include the discovery of attached serial port devices on the main WinDiscovery window has been checked. If it has not, select this option and perform another discovery by pressing the “Discover” button.
6. Ensure that you are allowing time for the entire discovery process for attached serial devices to complete. The discovery process will proceed in two stages. The first stage will detect the standard network devices. The second stage will detect attached serial devices.
7. Ensure that your router(s)/switch(es) and/or any firewall application are configured to allow bidirectional communication on ports 6165 and 6166 for RS-232 and RS-485 communications, respectively.

If these troubleshooting tips do not solve your problem, consult the support area of the www.masterclock.com website or contact technical support at: support@masterclock.com or call: (636) 724-3666

Specifications

		Type	4 Digit Time Displays		6 Digit Time/Date Displays				
		Model	NTD24	NTD44	NTD26	NTD46	NTD86		
LED Display	Dimension	LED Height inches(cm)	2.3(5.8)	4(10)	2.3(5.8)	4(10)	8(20)		
	Display Modes	Time	hh:mm	hh:mm	hh:mm:ss	hh:mm:ss	hh:mm:ss		
		12/24 hour mode	•	•	•	•	•		
		AM/PM indicator	•	•	•	•	•		
		Date US (mm/dd/yr)	NA	NA	•	•	•		
		Date European(dd/mm/yr)	NA	NA	•	•	•		
	Color Options	Red - <i>RED</i>	•	•	•	•	•		
		Green- <i>GRN</i>	•	•	•	•	•		
		Amber - <i>AMB</i>	•	•	•	•	•		
		Blue - <i>BLU</i>	•	•	•	•	•		
	CHASSIS	Mounting	Desktop/Shelf	•	•	•	•	•	
			Wall	Bracket (provided) Flushmount FM24N option	Bracket (provided) Flushmount FM44 option	NA (19" Rackmount)	Keyhole/*Bracket (BR46 option)	Keyhole/*Bracket (BR86 option)	
		Dimensions	Weight	lbs (kg)	1.8(9)	4(1.8)	8(3.6)	8.2(3.7)	26.3(11.8)
			Width	inches (cm)	9.4(23.9)	16.63(42.2)	19(48.3) w/ rackmount ears 17(43.2) without	25.25(64.1)	46.75(118.7)
			Height	inches (cm)	3.88(9.8)	5.25(13.3)	3.5(8.9)	7.63(19.4)	12.25(31.1)
			Depth	inches (cm)	1.88(4.8)	2(5.1)	6.5(16.5)	4.25(10.8)	4.5(11.4)
Color Options		Black (- <i>BLK</i>) (<i>Standard</i>)	•	•	•	•	•		
		Off White(- <i>OWHT</i>)	•	•	•	•	NA		
INPUT POWER OPTIONS		Alternating Current AC (<i>Standard</i>)	Voltage	100-240VAC +/-10% (90-264VAC)	NA	NA	•	•	• Note: Power <40 W
			Frequency	47-63 Hz					
	Power		<15W						
	Connector		IEC male jack						
	Power Over Ethernet to IEEE 802.3af (<i>POE option</i>)	Voltage	+48VDC	•	•	•	•	NA	
		Power	<12.95W class 0						
		Connector	RJ45						
	Direct Current (<i>DC option</i>)	Voltage	12-28VDC	•	•	Special Order	Special Order	NA	
		Power	<12W						
Connector		2.1mm							

Battery.....Maintenance Free - Rechargeable Manganese Lithium Coin Cell, 3V, 17mAh Panasonic ML1220

MODEL	Battery
NTD26 NTD46 NTD86	 3V,17 mAh, Coin Cell Rechargeable Manganese Lithium Panasonic ML1220/V1A
NTD24 NTD44	 3V,17 mAh ,Coin Cell Rechargeable Manganese Lithium Panasonic ML1220/F1A

Communications – Protocol

- DHCP (enabled by default) configuration, or via Static IP mode entry.
 - Network configuration: IP address, Netmask,
 - Gateway (Router - DHCP Option 03),
 - Primary and Secondary DNS (Domain Name Server - DHCP option 06)
 - Primary and Secondary NTP Servers (Network Time Protocol Server - DHCP Option 042)
 - Time Zone Offset (Time Offset – DHCP Option 02) – Note not enabled by default
- IPV4
- SNTP /NTP version 4 – UDP, port 123 (default)
 - Unicast [Query] (default), and broadcast, multicast modes.
- Telnet – TCP, port 23 (default)
- Control/WinDiscovery protocol – UDP, port 6163
- RS-232 (ASCII) - 9600 baud, 8 data bits, one stop bit, no parity - UDP, port 6165
- RS-485 – 9600 baud, 8 data bits, one stop bit, no parity – UDP, port 6166

Communications – I/O

Ethernet (10mbps)	RJ45, 10baseT
Length of communication cable (Cat5/5e)	100 meters maximum
RS-232 (Programming/Configuration Port)	DB9 male
Length of communication cable	3 meters maximum (use standard straight thru cable)
RS-485 (Programming/Configuration Port)	RJ11
Length of communication cable	3 meters maximum (use standard straight thru cable)

Power Requirements

AC Input Voltage	100-240 VAC +/-10% (90-264VAC), 47-63 Hz
AC Input Connector.....	Universal IEC input connector
AC power consumption	see table above for specific model(s)
Protection.....	Built in fuse , output power limiting,, over voltage, and short circuit protection.



Caution: there are no user serviceable parts inside the NTD display. Please contact the factory if you require servicing or repair.



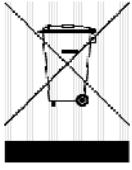

Power Over Ethernet Voltage.....	per IEEE802.3af PoE standard., +48VDC on spare pins 4 &5, Return on spare pins 7 & 8 +48VDC (& data) on pins 1&2, Return (& data) on pins 3 & 6
Power Consumption	<12.95 W, Class 0 device (see table above)
DC Input Voltage (special order option only)	see chart above for specific model
DC Input Connector.....	Male Switchcraft locking (p/n L722A)
Optional Threaded Female DC Input Power plug.....	Switchcraft p/n S761K (<i>available by special order</i>)
Power Consumption	(see table above)
Battery	(see table above).

Operating/Storage Temperature & Humidity

- Operating Temperature0 to +50°C
- Relative HumidityUp to 90% (non condensing @ 25°C)
- Storage Temperature-40 to +70° C

- Relative HumidityUp to 90% (non condensing @ 25°C)

Compliance

	<p><u>Models: NTD26-AC,NTD26-POE,NTD46-AC,NTD46-POE, NTD86-AC,NTD24-POE, NTD24-DC, NTD44-POE,NTD44-DC</u></p> <p>This equipment has been tested and found to comply with the radiated and line conducted limits for a Class B digital device. These limits are designed to provide reasonable protection against harmful interference in a commercial/residential installation.</p> <p>This device complies with part 15 of the FCC Rules. Operation is subject to the following two conditions: (1) This device may not cause harmful interference, and (2) this device must accept any interference received, including interference that may cause undesired operation</p>
	<p><u>Models: NTD26-AC,NTD26-POE,NTD46-AC,NTD46-POE, NTD86-AC,NTD24-POE, NTD24-DC, NTD44-POE,NTD44-DC</u></p> <p>Electromagnetic Compatibility 89/336/EEC ; 92/31/EC ; 93/68/EEC ; 2004/108/EC <u>Tested and Conforms to the following EMC standards :</u> EN61000-3-2:2000 (Harmonic Current Emission) EN61000-3-3:1995 + A1:2001 (Voltage Fluctuations & Flicker) EN61000-4-2:2000, ,3,4,5,6,8,11 (ElectroStatic Discharge, RF Immunity, Fast Transient CM, Surge, RF Injection CM, Power Frequency Magnetic Field, Voltage Dips) EN61000-6-3:2001 (EMC Emissions –Generic Commercial) EN55022:1998+A1:2000 +A2:2003 CISPR22</p> <p>Low voltage directive 2006/95/EC <u>Tested and Conforms to the following Safety standards:</u> EN60950-1:2001 (Safety of Information Technology Equipment)</p>
	<p>Waste Electrical and Electronic Equipment Directive (WEEE) 2002/95/EC</p> <p>The NTD models are considered WEEE Category 9 (Monitoring and Control Instruments) Equipment as defined by the WEEE Directive and therefore fall within the scope of the WEEE Directive.</p> <p>For more information about Masterclock’s WEEE compliance and recycle program, please visit the Masterclock WEEE/RoHS website at http:// www.masterclock.com/rohs.htm</p>
	<p>Restriction of the Use of Certain Hazardous Substances Directive 2002/95/EC</p> <p>The RoHS directive covers the same scope of electrical and electronic equipment that are under the WEEE directive, except that Category 8, Medical Devices, and Category 9, Monitoring and Control Instruments, which are under WEEE, are excluded from the RoHS directive.</p> <p>The time display products, <u>Models: NTD26-AC,NTD26-POE,NTD46-AC,NTD46-POE, NTD24-POE, NTD24-DC, NTD44-POE,NTD44-DC , NTD86-AC</u> fall under the category of Monitoring and Control Instruments Equipment (Category 9 as defined in Annex 1A of WEEE 2002/96/EC Directive) which is excluded from the RoHS directive 2002/95/EC (reference Article 2, paragraph 1) requirements.</p> <p><u>These products are manufactured using lead in the soldering process as allowed for items excluded from the RoHS directive. These units are RoHS Compliant only in that they are excluded from the RoHS directive under Category 9, Monitoring and Control Instruments.</u></p>

--	--

LIMITED WARRANTY

This Masterclock, Inc. (hereinafter MC) product warranty extends to the original purchaser.

MC warrants the NTD26, NTD46, and NTD86 against defects in materials and workmanship for a period of one year from date of sale. If MC receives notice of such defects during the warranty period, MC will, at its option, either repair or replace products, which prove to be defective.

Should MC be unable to repair or replace the product within a reasonable amount of time, the customer's alternate remedy shall be a refund of the purchase price upon return of the product to MC. This warranty gives the customer specific legal rights. Other rights, which vary from state to state or province to province, may be available.

Exclusions

The above warranty shall not apply to defects resulting from improper or inadequate installation or maintenance by the customer, customer-supplied software or interfacing, unauthorized modification or misuse, operation outside of the environmental specifications for the product or improper site preparation and maintenance (if applicable).

Warranty Limitations

MC MAKES NO OTHER WARRANTY, EITHER EXPRESSED OR IMPLIED, WITH RESPECT TO THIS PRODUCT. MC SPECIFICALLY DISCLAIMS THE IMPLIED WARRANTIES OF MERCHANTABILITY OR FITNESS FOR A PARTICULAR PURPOSE.

In any state or province which does not allow the foregoing disclaimer, any implied warranty of merchantability or fitness for a particular purpose imposed by law in those states or provinces is limited to the one-year duration of the written warranty.

Exclusive Remedies

THE REMEDIES PROVIDED HEREIN ARE THE CUSTOMER'S SOLE AND EXCLUSIVE REMEDIES. IN NO EVENT SHALL MC BE LIABLE FOR ANY DIRECT, INDIRECT, SPECIAL, INCIDENTAL, OR CONSEQUENTIAL DAMAGES, WHETHER BASED ON CONTRACT, TORT, OR ANY OTHER LEGAL THEORY.

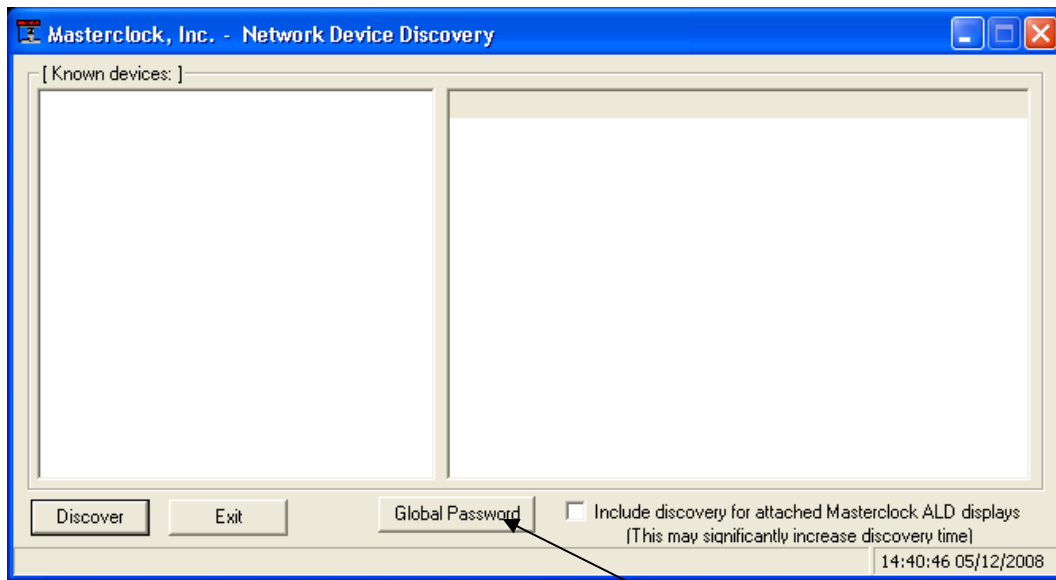
In any state or province which does not allow the foregoing exclusion or limitation of incidental or consequential damages, the customer may have other remedies.

Proprietary Notice

THIS DOCUMENT, WHETHER PATENTABLE OR NON-PATENTABLE SUBJECT MATTER, EMBODIES PROPRIETARY AND CONFIDENTIAL INFORMATION. IT MAY NOT BE REPRODUCED, USED OR DISCLOSED TO OTHERS FOR ANY PURPOSE EXCEPT THAT FOR WHICH IT IS PURCHASED OR LOANED.

Appendix A - WinDiscovery Global Password Feature

A significant feature has been added to *WinDiscovery* V2.6.0 and greater, which allows for the use of global passwords. Prior to the implementation of a global password feature, a password was required to be entered for each device being administered during a *WinDiscovery* session. With the global password feature enabled, a single password may be entered once during an initial session. All devices with that password may then be administered without entering the password for each device. The global password information is saved in the registry of the computer running *WinDiscovery*.

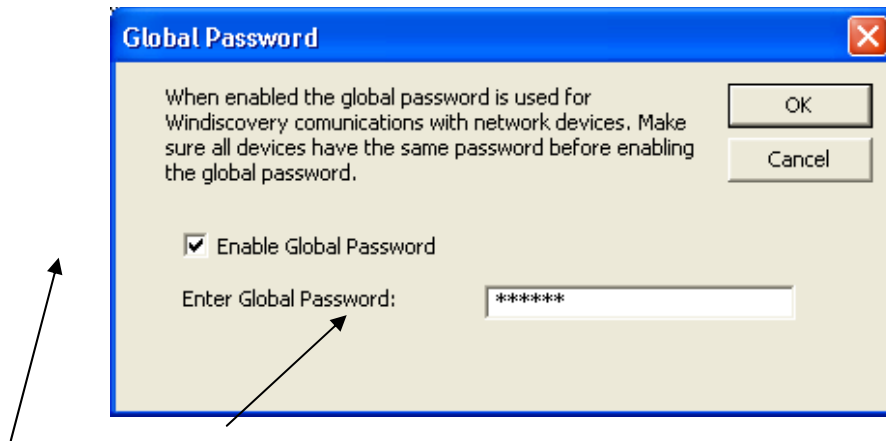


To utilize the global password, select the “Global Password” button on the main screen of *WinDiscovery*.

[Note: The global password information is saved in the registry, and if enabled, does not require the password to be entered during subsequent WinDiscovery sessions. To maintain security for your system you may wish to disable the global password at the end of each session, or only place WinDiscovery in a password protected user account or Administrator account which restricts access to the WinDiscovery application].

[Note: The global password being used must exactly match the existing password on all the devices being administered. For example, on any new system being installed, the factory default password on all devices is “public”. Therefore, the global password must also be set to “public”. To use a global password other than “public”, the password for each device of the group must be changed using the “Set Password” command (available on the right click menu of the item). The global password does not overwrite the existing password for a device, therefore any device with a different password cannot be administered.]

Enabling Global Password



- Enable the global password feature by selecting the “Enable Global Password” checkbox.
- Enter the global password.
- Select “OK”
- At this point the global password settings will be saved in the registry of the computer running *WinDiscovery*.
- During this session, and subsequent sessions of *WinDiscovery* , you will not have to enter the password.



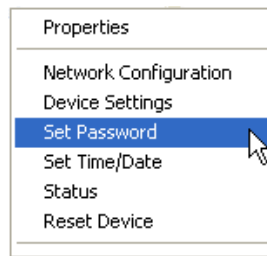
Disabling the Global Password

- Turn of the global password feature in *WinDiscovery* by deselecting the “Enable Global Password” checkbox.
- It is not necessary to delete the information from the global password field.

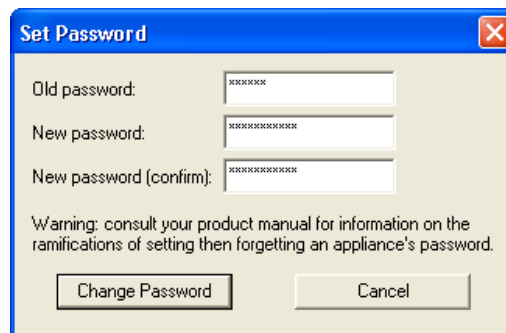
Changing the Global Password



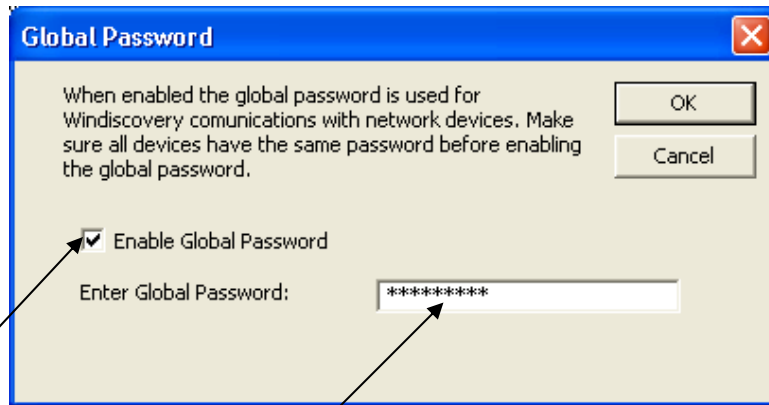
- Disable the global password feature in *WinDiscovery* by deselecting the “Enable Global Password” checkbox.
- Use *WinDiscovery* to manually change the password for each device to the new “desired” global password by using the “Set Password” command. (Available under the right click menu for each device)



- Enter the new password information and select the “Change Password” button.



- Repeat for each device in the group that is to use the global password.



- Re-enable the global password feature by selecting the “Enable Global Password” checkbox.
- Enter the new global password.