

Install Guide – TCR500-PCI

New Installations

1. Verify your package contents



- **TCR500-PCI Time Code Reader PCI card**
- **TCR Installation & Software CD**

CD Contents:

Masterclock, Inc. provides the following on the Installation & Software CD, which ships with the TCR card.

- User's Manuals (PDF format) & Quick Installation Guide
- Card drivers for the following operating systems: Windows 2000/XP/NT/ME/98/95

TCRInstaller Application

[Typical Installation –required in order to synchronize time in PC/Workstation/Server to time code input signal]

- Time Code Viewer – A time code display/diagnostic utility.
- TCRSync Configuration Utility
- TCRSync Monitor
- TCRSync-Professional – An advanced time synchronization software package providing time zone offset capabilities, automatic daylight savings time handling, unobtrusive background operation functionality, and many other high-end features.

[Custom Installation Option for programmers/developers]

- An “ SDK” (software development kit – libs,source code, sample MSVC++ and MSVisual Basic code, & documentation) for developers.

2. Verify that you have administrator privilege on the machine you are installing to [Windows 2000/XP/NT].

3. Install the hardware



WARNING! The TCR500-PCI is a static sensitive device, which can be damaged by ESD. Observe the proper precautions for handling static sensitive devices. Damage sustained to the TCR500-PCI due to ESD or mishandling is not covered under warranty.

- Shut down the computer and remove power.
- Select the jumper setting [J1] to match your time code source.
 - ✓ OFF [No Jumper] - SMPTE
 - ✓ ON [Jumpered] - IRIG-B1
- Insert the TCR500-PCI into an available PCI bus slot.
- Apply power and Reboot the computer.
- Proceed to the next section for installing the TCR500- PCI drivers for Windows.

NOTE: Install the TCR500-PCI card into the PCI slot before installing any drivers. The TCR500-PCI is fully plug and play compatible. Windows OS's [With the exception of NT]) will detect this card on the next system boot, automatically configure the appropriate I/O port and interrupt settings, then prompt for the driver.

4. Install the drivers



Windows 2000/XP

- When the *Found New Hardware Wizard* appears, it will detect the device and prompt for drivers.
- Insert the TCR Installer CD into your CD drive.



www.masterclock.com

2484 West Clay, St. Charles, MO 63301
Phone: (636) 724-3666 Fax: (636) 724-3776

TCR500-PCI Installation Guide Rev 1.0.0 - Nov -04
Contact support@masterclock.com

© 2004, Masterclock, Inc.

- Browse to the CD drive where your driver CD is inserted, then to the “drivers\TCR500\Win2000” folder.
- Windows 2000/XP will autoloading the drivers, it is not necessary to restart your system.
- The driver installation process is complete.



Windows NT (3.51/4.0 SP6)

- Insert the TCR Installer CD into your CD drive.
- Using File Manager or the Windows Explorer, browse to the root directory of the CD drive.
- Run the TCRInstaller.exe application.
- Follow the on-screen instructions and prompts provided by the install program.
- Follow any prompts to restart your computer.
- The driver installation process is complete.
- Note that the driver installation will place a configuration applet into the Windows NT control panel. This applet can be used to change driver configuration parameters later, if necessary, without re-installing the driver.



Windows ME

- When the *Add New Hardware Wizard* appears, insert the TCR Installation & Software CD into your CD drive.
- Select the option *Automatically Search for a better driver (Recommended)*, then select *Next*.
- Windows Me will scan your CD drive, and will also spend several minutes scanning the Windows system folder. Please allow this process to complete uninterrupted. When scanning is completed, Windows will copy the driver from the diskette onto the computer. Select *Finish* to complete the process.
- Follow any prompts to restart your computer.
- The driver installation process is complete.



Windows 98/98SE

- When the *Add New Hardware Wizard* appears, insert the TCR Installation & Software CD into your CD drive.
- Select *Next*, choose the option *Search for the best driver for your device (Recommended)*, then select the *Next* button again.
- Check the *Specify a location* option, then select the *Browse* button.
- Browse to the CD drive where your TCR Installation & Software CD is inserted, then to the “drivers\TCR500\Win9x” folder. Select *OK*, then select *Next*.
- Windows will indicate that it has found an appropriate driver for your TCR500-PCI card. Select *Next*.
- If at this point Windows indicates that it cannot find the file ‘vtrcd.vxd’, select the *Browse* button and browse to the “drivers\TCR500\Win9x” folder. Select *OK*, then *OK* a second time. Select *Finish*.
- Follow any prompts to restart your computer.
- The driver installation process is complete.



Windows 95

- When the *Update Device Driver Wizard* appears, insert the TCR Installation & Software CD into the CD drive.
- Select *Next*, then select the *Other Locations* button and browse to the CD drive, then to the “drivers\TCR500\Win9x” folder
- Windows will indicate that it has found an updated driver for your TCR. If at this point Windows indicates that it cannot find the file ‘vtrcd.vxd’, select *Browse* and browse to the CD drive where your driver CD is inserted, then to the “drivers\TCR500\Win9x” folder.
- Follow any prompts to restart your computer.
- The driver installation process is complete.

5. Install the software



Windows [2000/XP/NT/ME/98SE/98/95]

- Run “TCRInstaller.exe” from the root directory CD (root directory) to install the TCR500-PCI software tools/sync programs using the Installation Program on the CD.
- NOTE: The TCRInstaller application may autostart when you insert the CD.
- Select your desired type of installation. (Typical/Custom)

6. Set the configuration

- Connect your time code source, and configure your time code source input using the TCR Sync Configuration utility.
- Reboot your computer at this time.
- Refer to the User's Manual for additional information regarding configuring and using software tools.

Installation is complete

PREVIOUS Installations

IMPORTANT NOTE: If you are updating from a previous TCR card such as the TCR500 or TCR200 **uninstall all previous versions of TCR hardware and software using the uninstall utility from the original installation floppy diskettes before proceeding. Once the uninstall is complete, you may treat the installation as a new install.** Please refer to the section in this guide regarding uninstalling TCR hardware and software.

UPDATING TO A NEW TCR500-PCI DRIVER

To update to a newer TCR driver for Windows NT 3.51/4.0, follow the instructions for installing a new driver.

1. For all other Windows platforms, locate the existing TCR device in the Device Manager.
 - To access the Device Manager under Windows 95, 98, and Me – go to the Control Panel and open the *System* applet. Select the *Device Manager* tab. If a TCR device is installed, it will be located under the *Other Devices* category.
 - To access the Device Manager under Windows 2000 – go the Control Panel and open the *System* applet. Select the *Hardware* tab, then the *Device Manager* button. The TCR device will be located under the *Time Code Reader* category.
2. Select the TCR device, then right-click on the device and select *Properties*.
3. Select the *Driver* tab, then the *Update Driver* button.
4. Jump to the instructions for installing a new TCR driver on your Windows platform.

UNINSTALLING THE TCR500 SOFTWARE AND HARDWARE

This section discusses the uninstall process of the TCR500 software and hardware.

You may repair, modify, or remove the installed software for the TCR500 which has been installed using the TCRInstaller.exe from the CD, by either running the TCRInstaller.exe from the CD or from Add/Remove Programs in the Control Panel.

To remove previous installations of the TCR1000 tools and software installed using floppy disks, please see the next section.

REMOVING A PREVIOUS TCRSYNC INSTALLATION

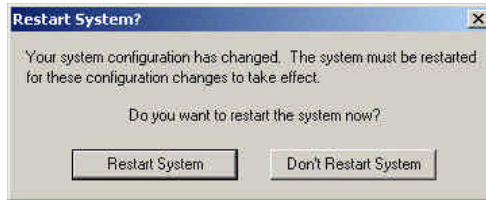
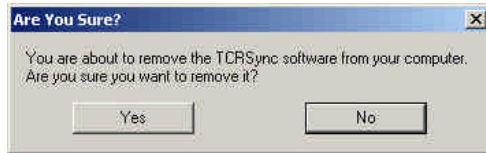
Note: If you are updating from a previous version of TCRSync such as TCRSync-Pro and the TCR500 time code reader card, you may follow these directions to remove the old version of TCRSync (TCRSync-Pro), TCR500 software tools and the TCR500 hardware.

An uninstaller mechanism for removing a TCRSync installation has been provided to assist the administrator in removing all TCRSync components from the Windows system. The software may be removed through the Add/Remove Programs applet in the Control Panel and/or the *Uninstall* entry in the TCRSync program group.

Note: Attempts to manually remove a TCRSync installation from a Windows system should be avoided unless recommended/supervised by technical support.

Note: It is required that an old TCRSync installation be removed prior to re-installing/upgrading TCRSync. Attempting to re-install over an already active TCRSync installation will fail! Install may recommend executing the remove old installation procedure if it fails one of the installation steps.

Follow the on screen prompts to complete your uninstall.

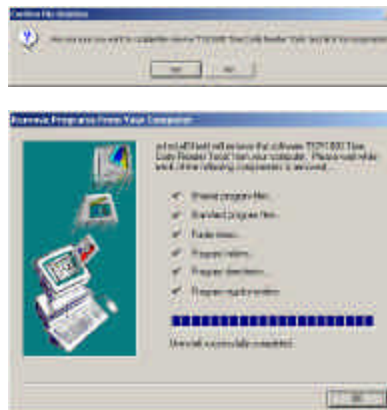


Follow the prompts and restart your system at this time.

UNINSTALLING TCR TOOLS

An uninstaller mechanism for removing a TCR500 tools installation has been provided to assist the administrator in removing all TCR tools components from the Windows system. The software may be removed through the Add/Remove Programs applet in the Control Panel and/or the *Uninstall* entry in the TCR500 tools program group.

Follow the on screen prompts to complete your uninstall.



UNINSTALLING TCR HARDWARE & DRIVERS

You can uninstall the TCR hardware by using the Add/Remove Hardware Wizard. Select "Uninstall\Unplug a device", then select "Uninstall a device", select the "Masterclock TCR500". Confirm your selection and complete the uninstall.

You may now safely shut down your computer and remove the TCR hardware.